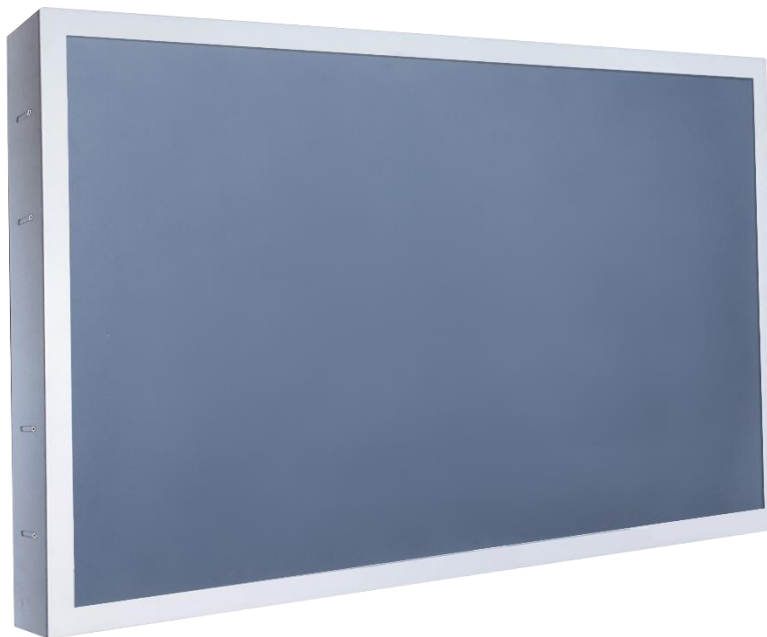


Product Specifications

Customer	
Model Name	NTWI430-2 V510D
Model Number	NTWI430H <u>X2XX</u> -GI <u>XXXXXX</u> - <u>XXXA</u> -510D

* X = A~Z, 0~9 (Depends on Options.)



Records of Revision			
Vision	Modifying	Old Description	New Description
v2211.1	Preliminary Specification		
v2211.2	New trademark released		

Nextech WI Series 43" Industrial All-in-one Touch PC

NTWI430-2 V510D

Features

- ★ 43 inch Industrial Grade Panel, 1920x1080 (FHD) Resolution
- ★ VA Wide Viewing Angel 178°/178°
- ★ 1500nits High Brightness
- ★ Intel® 10th Generation CPU
- ★ DDR4 8G RAM (Max. 64G)
- ★ Optional I.R. Touch
- ★ 10 points Multi-touch, 7H Hardness Tempered Cover Glass
- ★ Metal Cabinet with Diverse Combine Options
- ★ Made in Taiwan, 3 Years Warranty, Designed for Harsh Environments



PSE



BSMI



RoHS



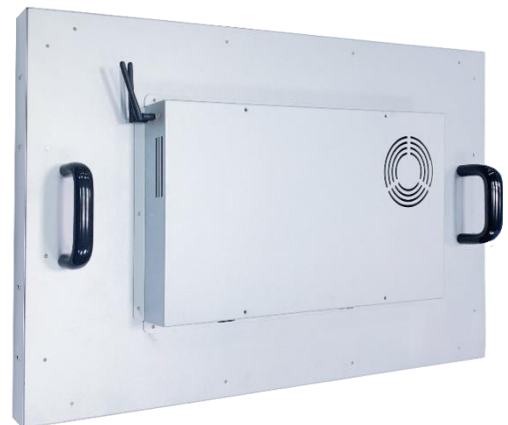
CE



ISO9001



FCC



Wall Mounting



Cart



KIOSK Cabinet

System Specifications

CPU	Intel® 10 th Gen. Core™ i9/i7/i5/i3, Pentium® & Celeron® CPU
Memory	DDR4 SO-DIMM x2, Max. 64G
GPU	Intel® HD Graphics
Sound Chip	Realtek Audio Codec
Network	Intel Gigabit LAN, 2 * RJ45 ports

Display Specifications

Screen Diagonal	43 inch.	Display Mode	VA Type, Normally Black
Display Area	940.9x529.25 mm	Backlight Unit	LED (white LED)
Resolution	1920x1080 (FHD)	Viewing Angle (L/R, U/D)	178°/178° (CR=10)
Contrast Ratio	4000:1	Response Time	8 msec.
Display Ratio	16:9	Backlight Lifetime	>70,000 Hours
Support Colors	16.7M Colors	Operating Temp.	0~50°C
Pixel Pitch	0.49x0.49 mm	Storage Temp.	-20~60°C
Brightness	1500 nits		

Touch Options

I.R. Touch			
Model Name	NTWI430H <u>I</u> 2XX-GIXXXXX-XXXXA-510D		
Touch Technology	I.R. Touch	Transparency	≥92%
Allowed Touch Points	10 points	Accuracy	99.00%
Interface	USB	Thickness of Cover Lens	4.0±0.2mm
IK Ratings	IK07	Hardness of Cover Lens	7H

Non-Touch	
Model Name	NTWI430H <u>0</u> 2XX-GIXXXXX-XXXXA-510D

Surface Treatment		
	Description	Model Name
Standard	(none)	NTWI430HX2 <u>00</u> -GIXXXXX-XXXXA-510D
Option	Anti-Glare Coating	NTWI430HX2 <u>GG</u> -GIXXXXX-XXXXA-510D

Nextech WI Series 43" Industrial All-in-one Touch PC

NTWI430-2 V510D

System Options

CPU		
	Item	Model Name
Standard	Intel® Core i3-10100	NTWP430HX2XX-GI31XXX-XXXXA-510D
Option 1	Intel® Core i5-10400	NTWP430HX2XX-GI 51 XXX-XXXXA-510D
Option 2	Intel® Core i7-10700U	NTWP430HX2XX-GI 71 XXX-XXXXA-510D
Option 3	Intel® Pentium G6405	NTWP430HX2XX-GI P1 XXX-XXXXA-510D
Option 4	Intel® Celeron G5905U	NTWP430HX2XX-GI C1 XXX-XXXXA-510D

Memory		
	Item	Model Name
Standard	DDR4 SO-DIMM 8G	NTWI430HX2XX-GIXX8XX-XXXXA-510D
Option 1	DDR4 SO-DIMM 16G	NTWI430HX2XX-GIXX A XX-XXXXA-510D
Option 2	DDR4 SO-DIMM 32G	NTWI430HX2XX-GIXX B XX-XXXXA-510D
Option 3	DDR4 SO-DIMM 64G	NTWI430HX2XX-GIXX C XX-XXXXA-510D

Storage		
	Item	Model Name
Standard	SSD 128G	NTWI430HX2XX-GIXXXS1-XXXXA-510D
Option 1	SSD 256G	NTWI430HX2XX-GIXXX S2 -XXXXA-510D
Option 2	SSD 512G	NTWI430HX2XX-GIXXX S3 -XXXXA-510D
Option 3	SATA HDD 1T	NTWI430HX2XX-GIXXX H1 -XXXXA-510D
Option 4	SSD 128G + SATA HDD 1T	NTWI430HX2XX-GIXXX SH -XXXXA-510D

System Options (Continued)

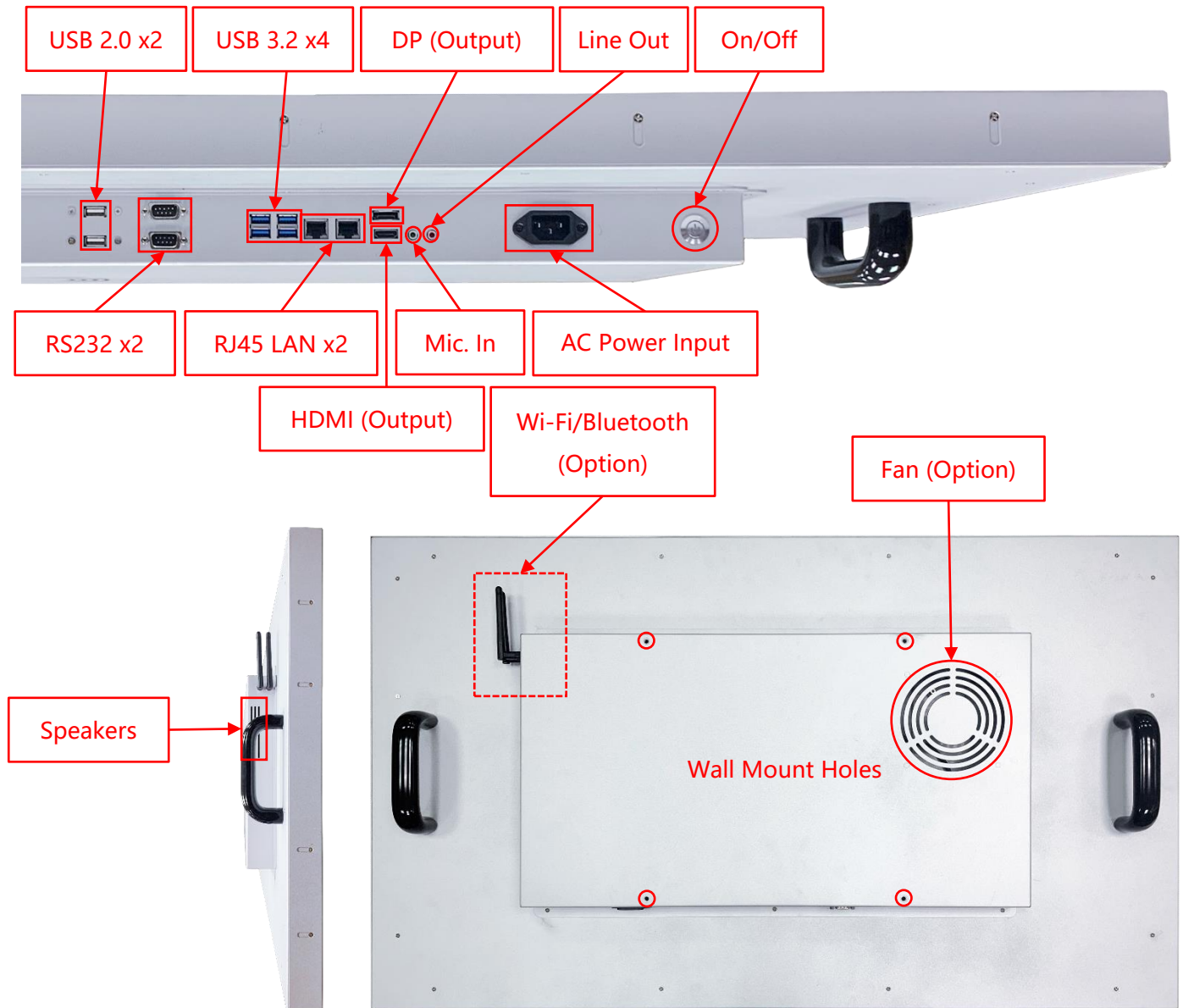
Material of Cabinet		
	Description	Model Name
Standard	SECC	NTWI430HX2XX-GIXXXXXX-<u>S</u>XXA-510D
Option 1	Stainless Steel	NTWI430HX2XX-GIXXXXXX- <u>L</u> XXA-510D
Option 2	Aluminum	NTWI430HX2XX-GIXXXXXX- <u>A</u> XXA-510D

Color of Cabinet		
	Description	Model Name
Standard	Silver	NTWI430HX2XX-GIXXXXXX-<u>X</u>SXA-510D
Option 1	White	NTWI430HX2XX-GIXXXXXX- <u>X</u> WXA-510D
Option 2	Black	NTWI430HX2XX-GIXXXXXX- <u>X</u> BXA-510D
Options	Other Colors	NTWI430HX2XX-GIXXXXXX- <u>X</u> XXA-510D

* X = A~Z, 0~9 (Depends on Color)

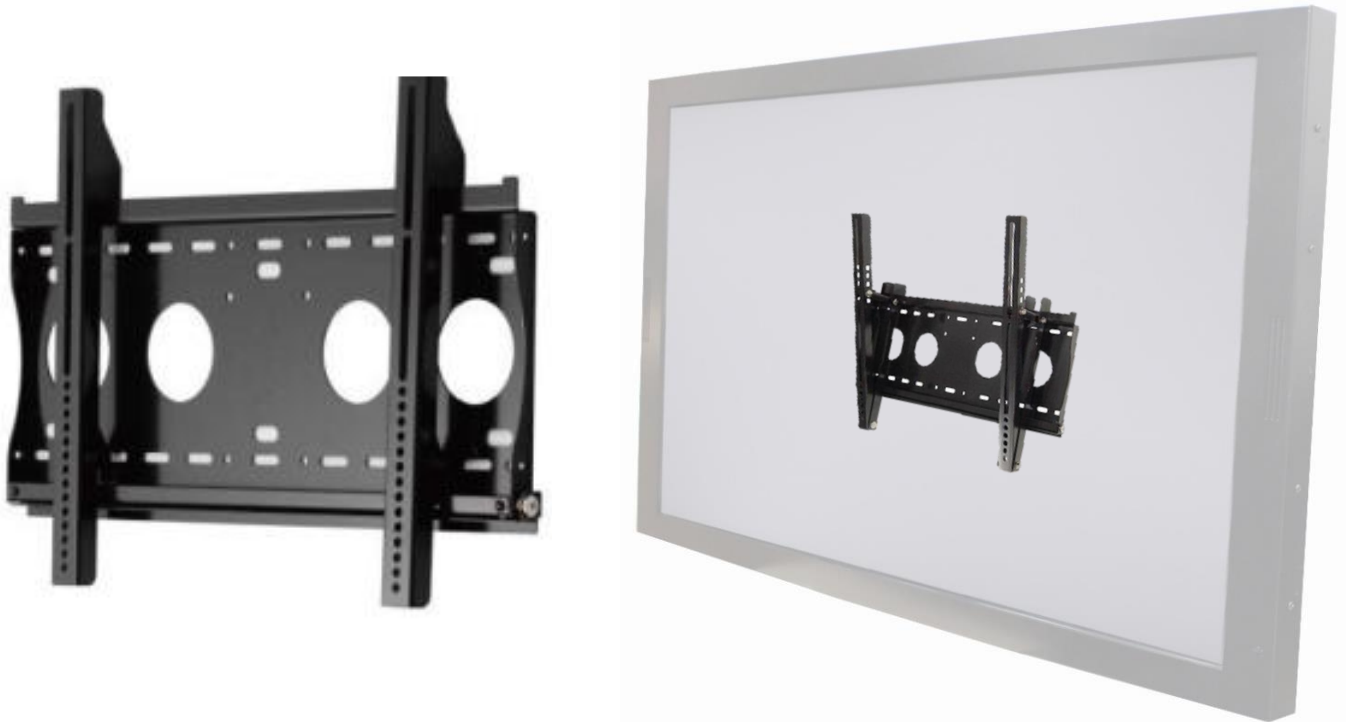
Cooling Fan		
	Description	Model Name
Standard	Fanless	NTWI430HX2XX-GIXXXXXX-<u>XX</u>0A-510D
Option	7 Blades/12V/1200r.p.m/25dB	NTWI430HX2XX-GIXXXXXX- <u>XX</u> FA-510D

Input /Output System

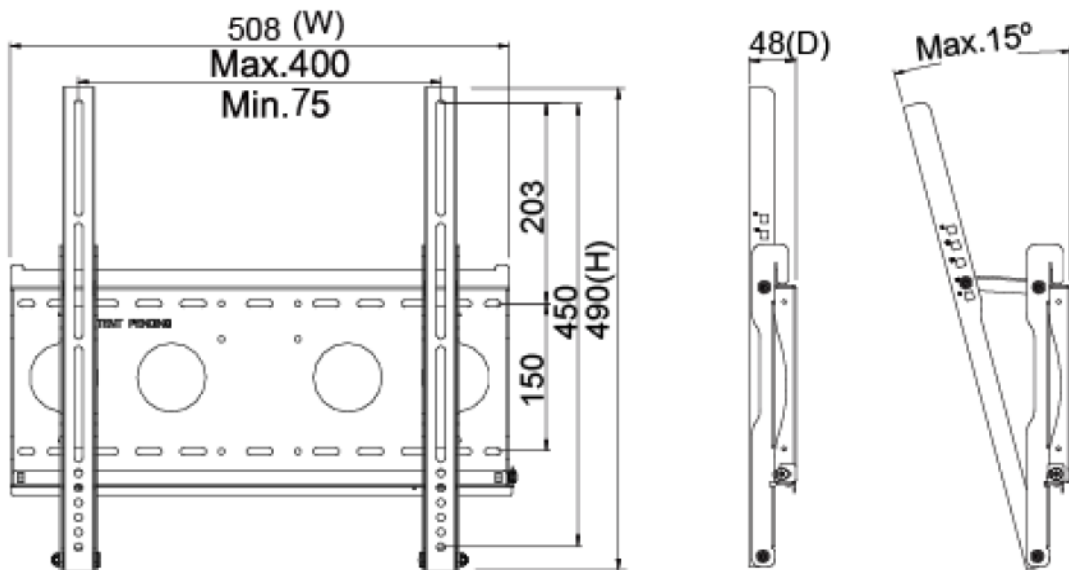


Input / Output	Connectors	Input / Output	Connectors
HDMI (Output)	1	Audio Out (3.5mm)	1
DP (Output)	1	Mic. In (3.5mm)	1
USB 3.2 Gen1	4	Speakers	10W x2
USB 2.0	2	AC Power Input	1
RS232	2	Wi-Fi/Bluetooth & Antenna	Option
LAN (RJ45)	2		

Wall Mount Bracket (Option)



Part No.	WMB-B001		
Mounting Pattern	Max. 400x450 mm	Mounting Pattern	Max. 400x450 mm
Material	SECC	Material	SECC
Tilt (Hinge)	0°/5°/10°/13°/15°	Tile (Hinge)	0°/5°/10°/13°/15°
Screw Type	M4/M5/M6/M8	Screw Type	M4/M5/M6/M8



KIOSK SET (Option)



Material	SECC
Caster	4 (front 2 braking)
Ingress Protection	Front IP65
Power Socket	None (Wire Hole Reserved)



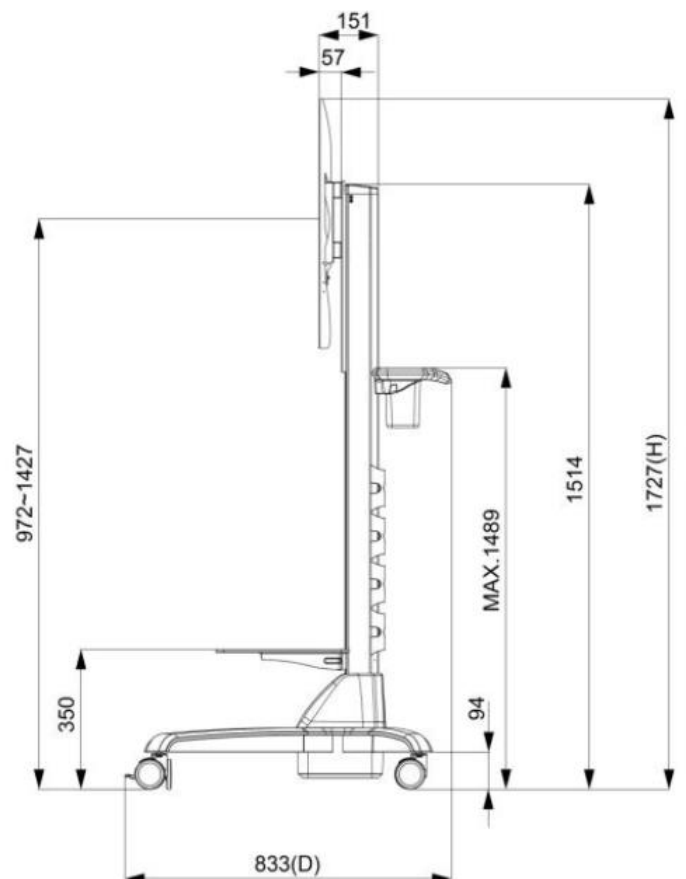
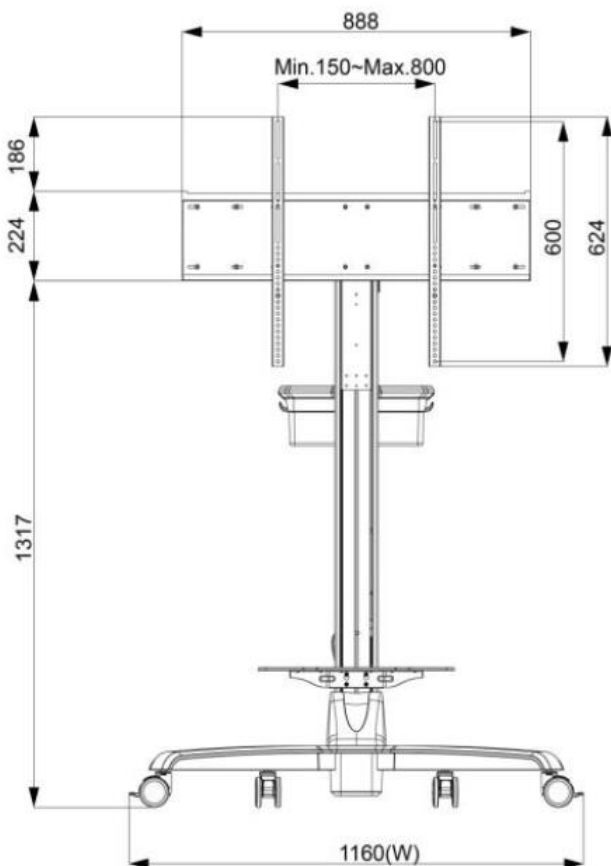
Nextech WI Series 43" Industrial All-in-one Touch PC

NTWI430-2 V510D

Cart (Option)



Net Weight	32.5 KG
Packaged Dimension	W1545xD383xH392 mm
Screw Type	M4/M5/M6/M8
Material	Aluminum/Plastic/Steel
Max. Mount Pattern	800x600mm
Max. Weight Load	30 KG
Caster	4 (front 2 braking)
Height Adjust Range	500 mm
RoHS/REACH Compliance	Yes



Packing Information



Dimensions of Carton	1128x240x780 mm
Net Weight	≤20.9 KG
Gross Weight	≤25.1 KG

Nextech WI Series 43" Industrial All-in-one Touch PC

NTWI430-2 V510D

Physical Specifications

Dimension	997x585x102.5(±2)mm (w/o Antenna)	Net Weight	≤20.9 KG
VESA Mounting	300x300 mm	Gross Weight	≤25.1 KG

