



# Product Specifications

<b>Customer</b>	
<b>Model</b>	<b>NTSP650-2 V500</b>



Records of Revision			
Vision	Modifying	Old Description	New Description
v2112.1	Preliminary Specifications		

## Features

- ★ 65 inch Industrial Grade Panel, 4K (UHD) Resolution
- ★ VA Technology, Wide Viewing Angle (178°/178°)
- ★ 700nits High Brightness
- ★ True Flat Projected Capacitive Touch Screen
- ★ 7H Hardness Tempered Cover Glass
- ★ 10 points Multi-touch , Supports Active Stylus
- ★ Metal Cabinet with Diverse Combine Options
- ★ Made in Taiwan, 3 Years Warranty
- ★ Optional Front IP65
- ★ Optional Software Remote Control by RS232
- ★ Optional Auto Dimming Function (with Light Sensor)



PSE



BSMI



RoHS



CE



ISO9001



FCC



Wall Mounting



Cart



KIOSK Cabinet

## Display Specifications

Model Name	<b>NTSP650HP29A-GGXXUX-500*</b>	Display Mode	<b>MVA Type, Normally Black</b>
Screen Diagonal	<b>64.5 inch.</b>	Response Time	<b>8 msec.</b>
Display Area	<b>1428.4x803.5 mm</b>	Backlight Unit	<b>LED (white LED)</b>
Resolution	<b>3840x2160 (UHD)</b>	Viewing Angle (L/R, U/D)	<b>178°/178° (CR=10)</b>
Contrast Ratio	<b>4000:1</b>	Backlight Lifetime	<b>&gt;70,000 Hours</b>
Display Ratio	<b>16:9</b>	Operating Temp.	<b>0~50°C</b>
Support Colors	<b>1073M Colors</b>	Storage Temp.	<b>-20~60°C</b>
Pixel Pitch	<b>0.372x0.372 mm</b>	Surface Treatment	<b>Anti-glare, Hardness 3H</b>
Brightness	<b>700nits</b>		

\* X = A~Z, 0~9 (Depends on options)

## Touch Specifications

Projected Capacitive			
Touch Technology	<b>Projected Capacitive</b>	Transparency	<b>≥87%</b>
Allowed Touch Points	<b>10 points</b>	Thickness of Cover Lens	<b>2.9±0.2mm</b>
Interface	<b>USB</b>	Hardness of Cover Lens	<b>7H</b>
Accuracy	<b>99.00%</b>	Surface Treatment	<b>Anti-glare</b>
IK Ratings	<b>IK07</b>		





## General Options

Color of Cabinet		
	Description	Model Name
<b>Standard</b>	<b>Black</b>	<b>NTSP650HP29A-GG<u>B</u>X<u>U</u>X-500</b>
Option 1	White	NTSP650HP29A-GG <u>W</u> X <u>U</u> X-500
Option 2	Silver	NTSP650HP29A-GG <u>S</u> X <u>U</u> X-500
Options	Other Color	NTSP650HP29A-GG <u>X</u> X <u>U</u> X-500

\* X = A~Z, 0~9 (Depends on Color)

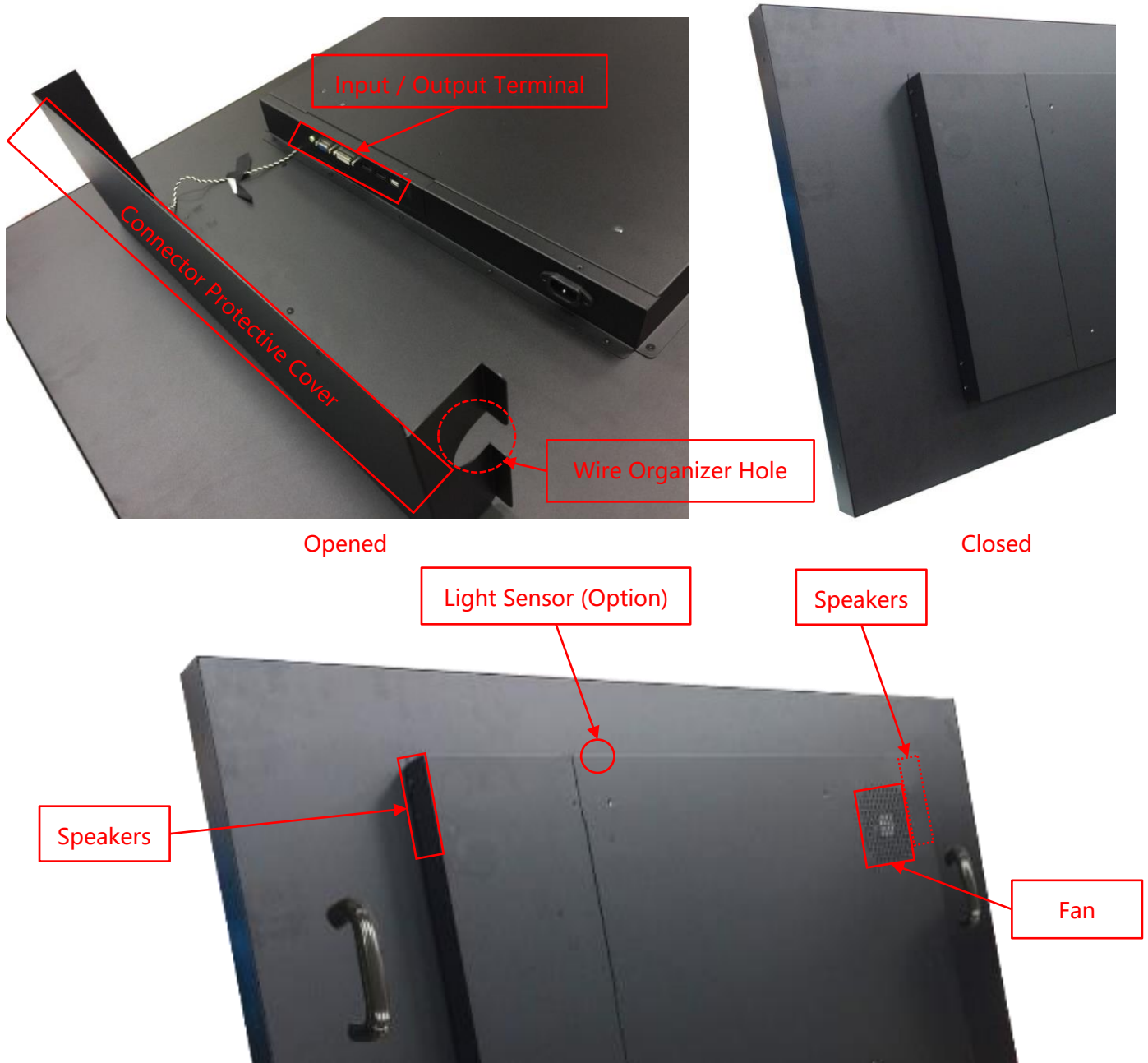
Material of Cabinet		
	Description	Model Name
<b>Standard</b>	<b>Galvanized steel (SECC)</b>	<b>NTSP650HP29A-GG<u>X</u><u>S</u><u>U</u>X-500</b>
Option 1	Stainless Steel	NTSP650HP29A-GG <u>X</u> <u>L</u> <u>U</u> X-500
Option 2	Aluminum	NTSP650HP29A-GG <u>X</u> <u>A</u> <u>U</u> X-500

Cooling Fan		
	Description	Model Name
<b>Standard</b>	<b>Fanless</b>	<b>NTSP650HP29A-GG<u>X</u><u>X</u><u>U</u><u>0</u>-500</b>
Option	7 Blades/12V/1200r.p.m/25dB	NTSP650HP29A-GG <u>X</u> <u>X</u> <u>U</u> <u>F</u> -500

## Accessories

Item	Description	Quantity
HDMI Cable	<b>HDMI Male to Male, 1.8 Meter</b>	<b>1</b>
Power Cord	<b>*Country Specific</b>	<b>1</b>
USB Cable	<b>A type, Male to Male, 1.5 Meter*</b>	<b>1</b>

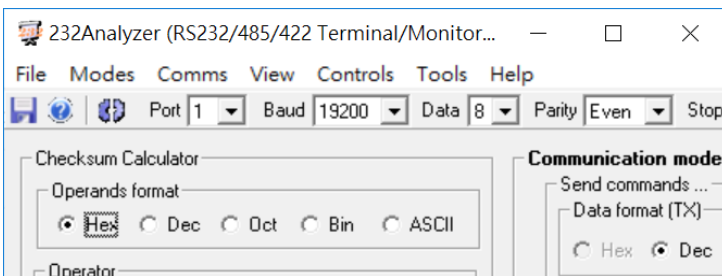
## Input /Output



Input / Output	Connectors	Input / Output	Connectors
HDMI Input	2	USB 2.0 Interface	1
VGA Input	1	RS232	Option
DisplayPort Input	2	Speakers	10Wx2
Audio Input (3.5mm)	1	Light Sensor	Option
AC Power Input (C14)	1		

## Other Options

OSD Control		
	Item	Description
<b>Standard</b>	<b>Button</b>	<b>Rear Physical Button</b>
Option 1	Software Remote Control	Software Remote Control by RS232/Serial Port
Option 2	Auto Dimming	Auto Brightness Adjusting by Light Sensor



\* Software Remote

Light Sensor



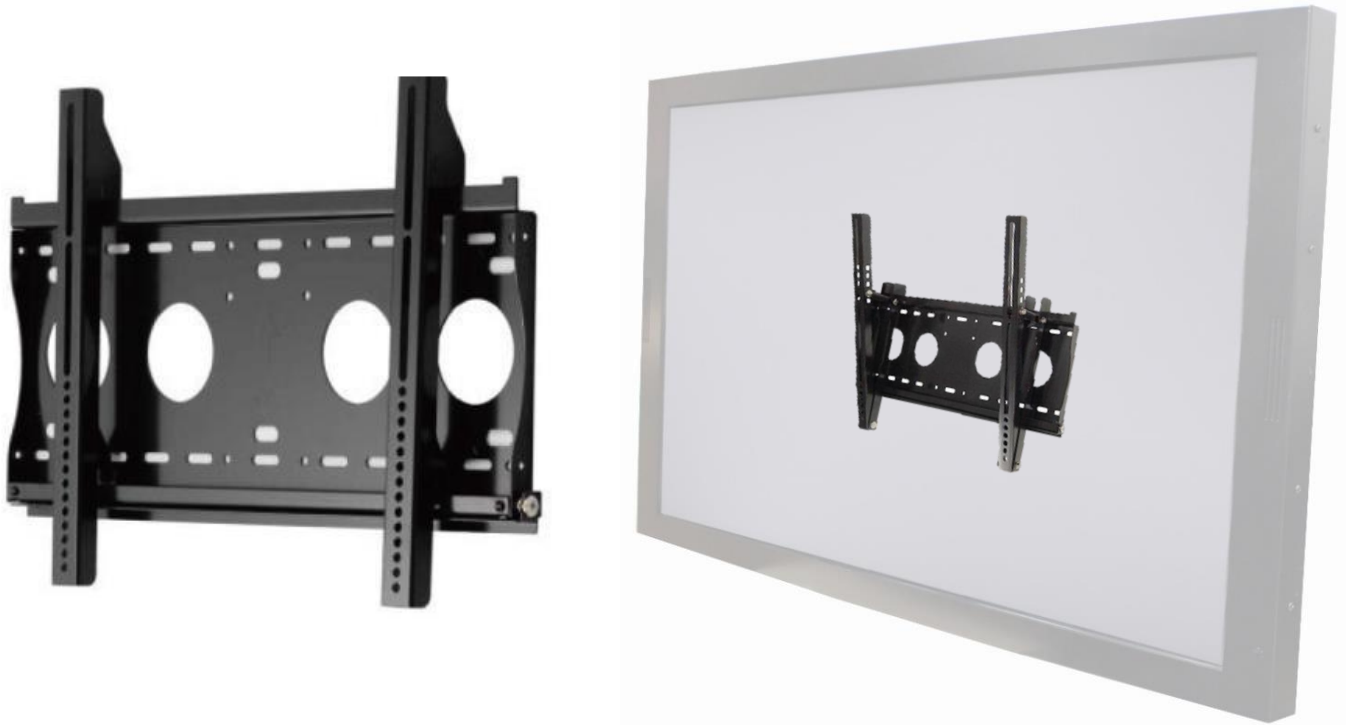
Active Stylus Option	
Technology	Active Capacitive Coupled
Working Frequencies	90~250 KHZ
Pressure Level	256~1024 Levels
Side Buttons	2 Side Buttons (Eraser, Barrel)
Active Tip Force	5~25g
Max. Tip Force	400g



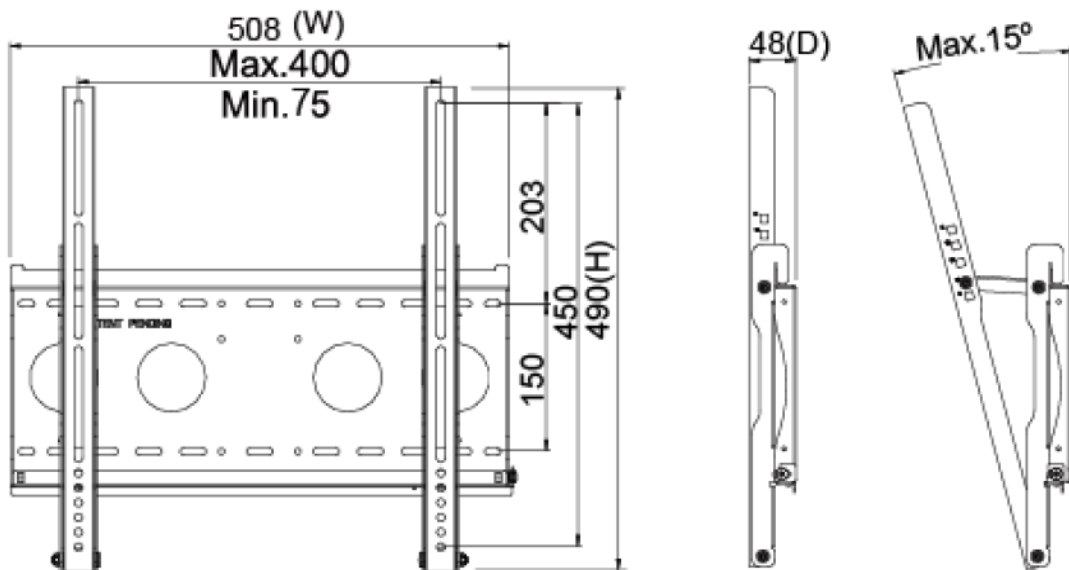
## Penholder (Option)



## Wall Mount Bracket (Option)



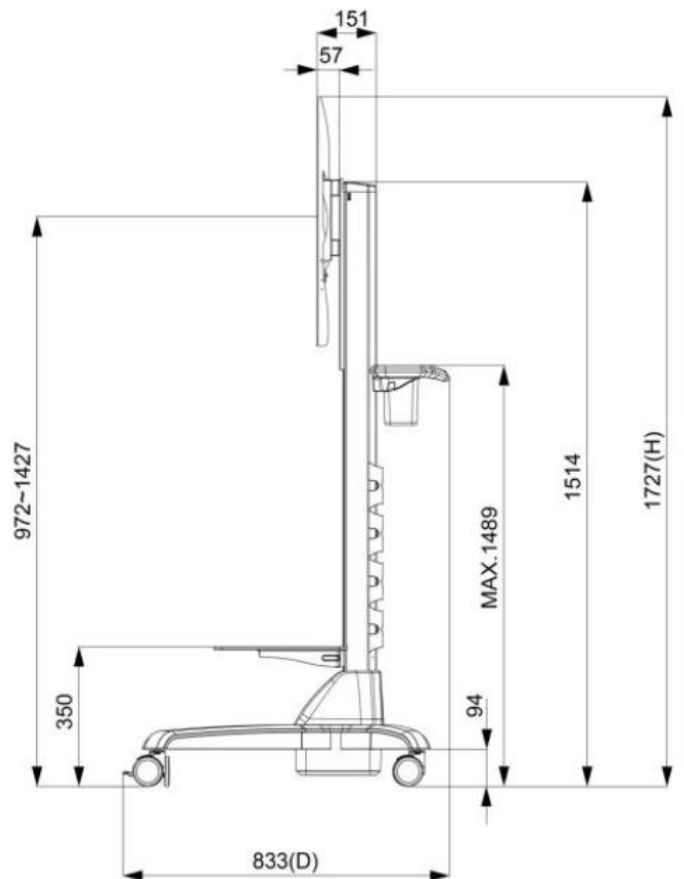
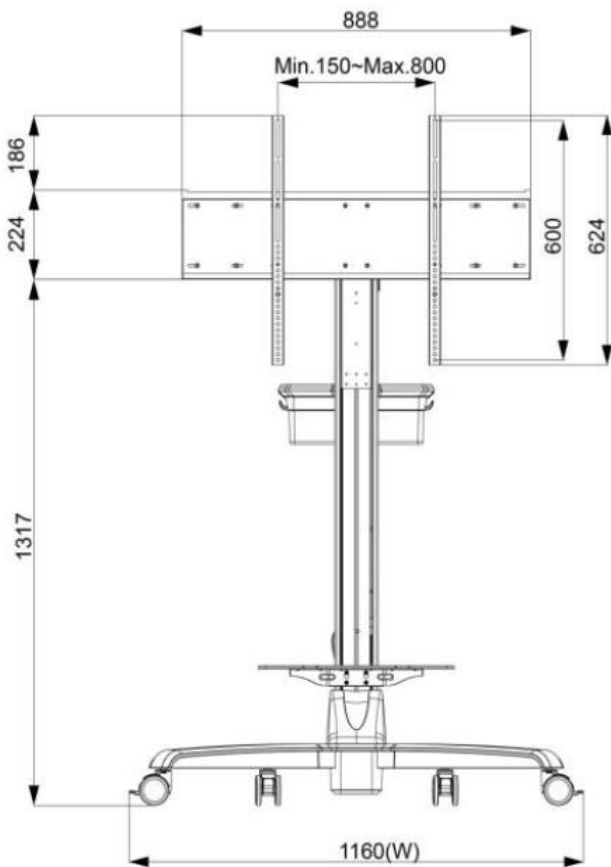
Part No.	WMB-B001		
Mounting Pattern	Max. 400x450 mm	Dimension (WxHxD)	508x490x48 mm
Material	SECC	Net Weight	4.01 KG
Tilt (Hinge)	0°/5°/10°/13°/15°	Support Max. Weight	80 KG
Screw Type	M4/M5/M6/M8	Min. Distance to The Wall	48 mm



**Cart (Option)**



Net Weight	28.4 KG
Power System	AC 200~240V 50/60Hz
User Interface	Button (up/down)
Packaged Dimension	W1160xD833xH1727 mm
Screw Type	M4/M5/M6/M8
Material	Aluminum/Plastic/Steel
Max. Mount Pattern	800x600mm
Max. Weight Load	80 KG
Caster	4 (front 2 braking)
Height Adjust Range	455 mm
RoHS/REACH	Yes





**KIOSK Cabinet (Option)**

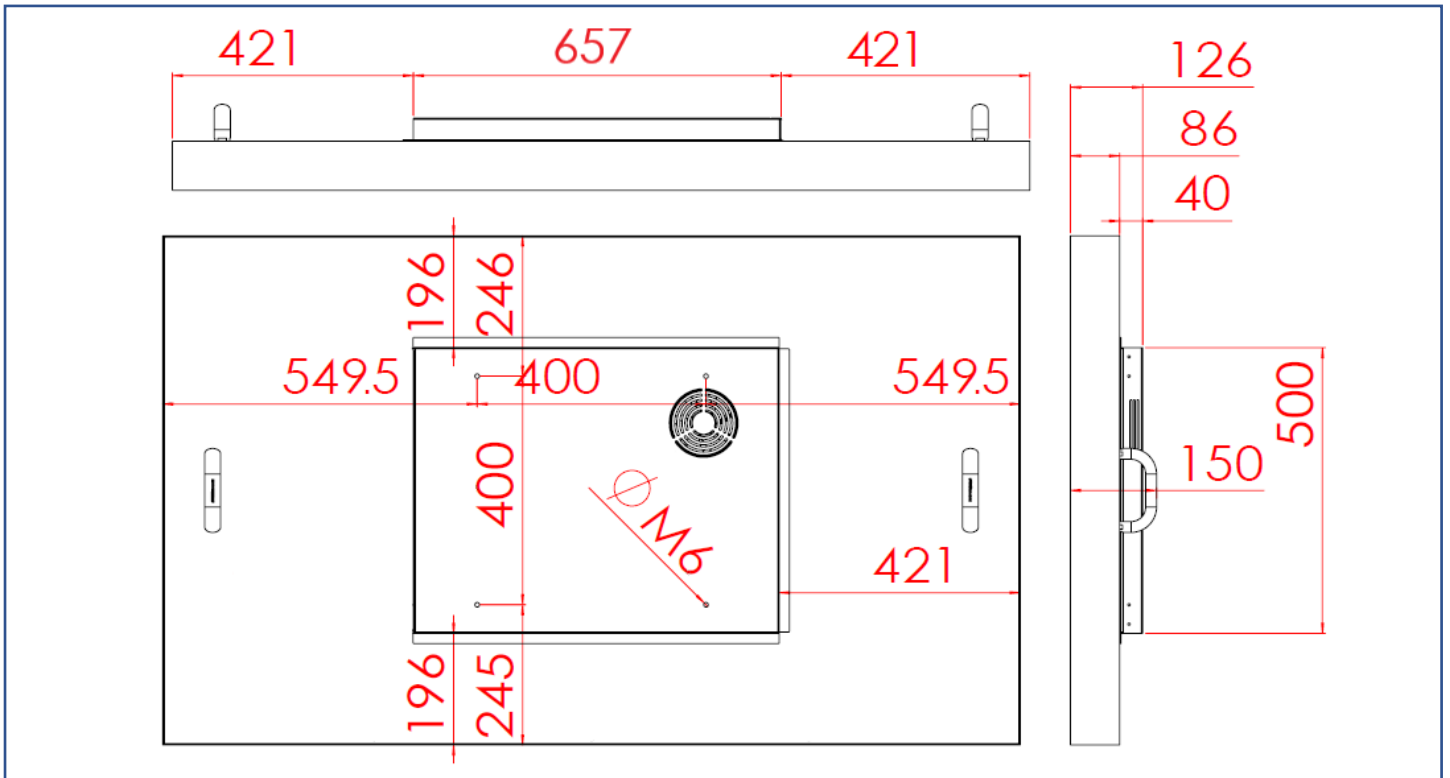
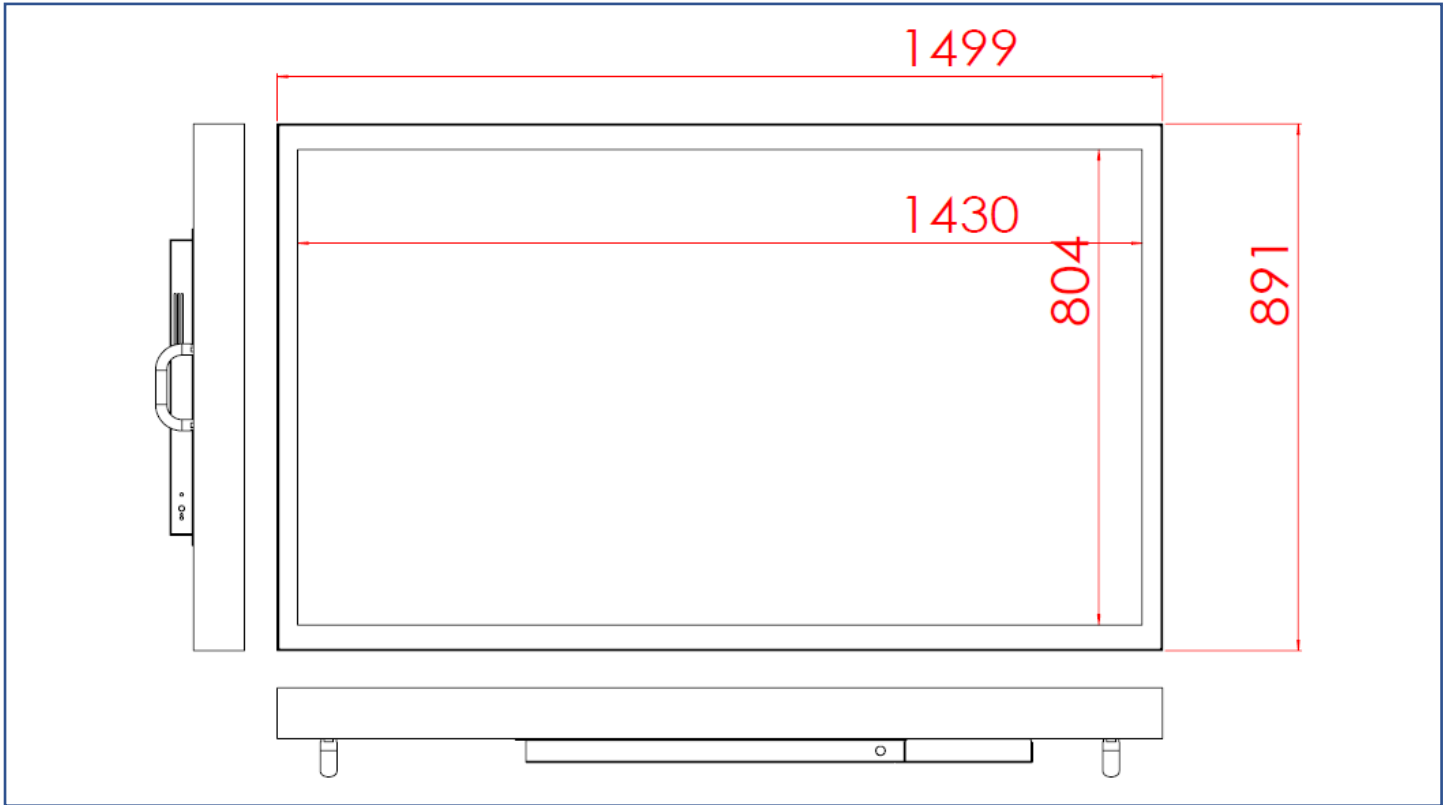


Material	SECC
Caster	4 (front 2 braking)
Ingress Protection	Front IP65
Power Socket	None (Wire Hole Reserved)



## Physical Specifications

Dimension (Max)	<b>1499x891x126(±2)mm</b>	Net Weight	≦ <b>51.0 KG</b>
VESA Mounting	<b>400x400 mm</b>	Gross Weight	≦ <b>62.1 KG</b>



## Packing Information



Dimensions of Carton	<b>168x111x36 CM</b>
Net Weight	<b>≤ 51.0 KG</b>
Gross Weight	<b>≤ 62.1 KG</b>