

# Product Specifications

<b>Customer</b>	
<b>Model</b>	<b>NTSP650-1 V600</b>



Records of Revision			
Vision	Modifying	Old Description	New Description
v2307.1	Preliminary Specifications		
<b>v2307.2</b>	<b>New trademark released</b>		

## Features

- ★ 65 inch Panel, 4K (UHD) Resolution
- ★ VA Technology, Wide Viewing Angle (178°/178°)
- ★ True Flat Projected Capacitive Touch Screen
- ★ Anti-Glare Coating, 7H Hardness Tempered Cover Glass
- ★ 10 points Multi-touch , Supports NEXTECH Stylus.
- ★ Metal Cabinet with Diverse Combine Options
- ★ Made in Taiwan, 3 Years Warranty
- ★ Optional Software Remote Control by RS232
- ★ Optional High Brightness 700nits
- ★ Optional Auto Dimming Function (with Light Sensor)



PSE



BSMI



RoHS



CE



ISO9001



FCC



Wall Mount Kit



Cart



KIOSK Cabinet

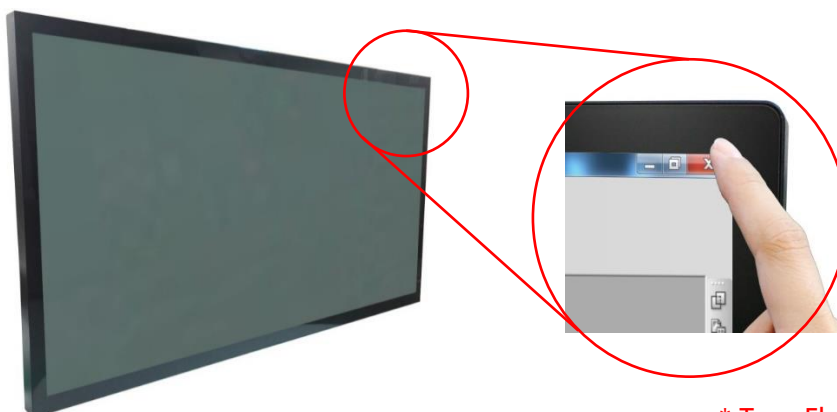
## Display Specifications

Model Name	<b>NTSP650XPS9A-GGXXUX-600*</b>	Display Mode	<b>VA Type, Normally Black</b>
Screen Diagonal	<b>65 inch</b>	Response Time	<b>9.5 msec.</b>
Display Area	<b>1432.2.4x807.3 mm</b>	Backlight Unit	<b>LED (white LED)</b>
Resolution	<b>3840x2160 (UHD)</b>	Viewing Angle (L/R, U/D)	<b>178°/178° (CR=10)</b>
Contrast Ratio	<b>5000:1</b>	Backlight Lifetime	<b>&gt;50,000 Hours</b>
Display Ratio	<b>16:9</b>	Operating Temp.	<b>0~50°C</b>
Support Colors	<b>1070 M Colors</b>	Storage Temp.	<b>-20~60°C</b>
Pixel Pitch	<b>0.124x0.372 mm</b>		

\* X = A~Z, 0~9 (Depends on options)

## Touch Specifications

Projected Capacitive			
Touch Technology	<b>Projected Capacitive</b>	Transparency	<b>≥87%</b>
Allowed Touch Points	<b>10 points</b>	Thickness of Cover Lens	<b>2.9±0.2mm</b>
Interface	<b>USB</b>	Hardness of Cover Lens	<b>7H</b>
Accuracy	<b>99.00%</b>	Surface Treatment	<b>Anti-glare</b>
IK Ratings	<b>IK07</b>		



\* True Flat, Bezel 1 mm

## General Options

Brightness			
	Brightness	Environment	Model Name
<b>Standard</b>	<b>500nits</b>	<b>General</b>	<b>NTSP650<u>N</u><u>P</u><u>S</u>9A-GG<u>X</u><u>X</u><u>U</u><u>X</u>-600</b>
Option	700nits	Outdoor Environment	NTSP650 <u>H</u> <u>P</u> <u>2</u> 9A-GG <u>X</u> <u>X</u> <u>U</u> <u>F</u> -600

\* Check the data sheet NTSP650-2 V500

Color of Cabinet		
	Description	Model Name
<b>Standard</b>	<b>Black</b>	<b>NTSP650<u>X</u><u>P</u><u>S</u>9A-GG<u>B</u><u>X</u><u>U</u><u>X</u>-600</b>
Option 1	White	NTSP650 <u>X</u> <u>P</u> <u>S</u> 9A-GG <u>W</u> <u>X</u> <u>U</u> <u>X</u> -600
Option 2	Silver	NTSP650 <u>X</u> <u>P</u> <u>S</u> 9A-GG <u>S</u> <u>X</u> <u>U</u> <u>X</u> -600
Options	Other Color	NTSP650 <u>X</u> <u>P</u> <u>S</u> 9A-GG <u>X</u> <u>X</u> <u>U</u> <u>X</u> -600

\* X = A~Z, 0~9 (Depends on Color)

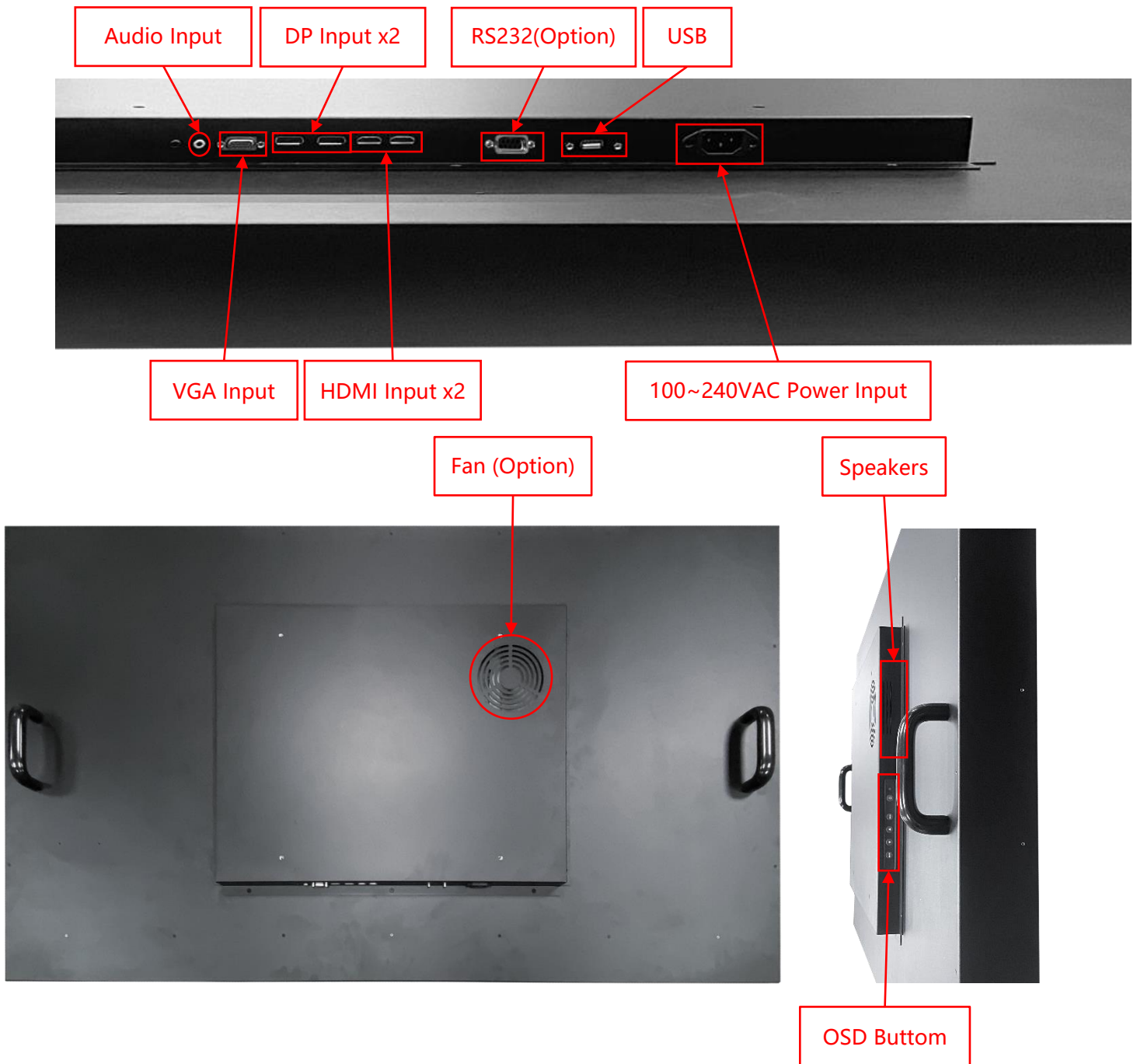
Material of Cabinet		
	Description	Model Name
<b>Standard</b>	<b>Galvanized steel (SECC)</b>	<b>NTSP650<u>X</u><u>P</u><u>S</u>9A-GG<u>X</u><u>S</u><u>U</u><u>X</u>-600</b>
Option 1	Stainless Steel	NTSP650 <u>X</u> <u>P</u> <u>S</u> 9A-GG <u>X</u> <u>L</u> <u>U</u> <u>X</u> -600
Option 2	Aluminum	NTSP650 <u>X</u> <u>P</u> <u>S</u> 9A-GG <u>X</u> <u>A</u> <u>U</u> <u>X</u> -600

Cooling Fan		
	Description	Model Name
<b>Standard</b>	<b>Fanless</b>	<b>NTSP650<u>X</u><u>P</u><u>S</u>9A-GG<u>X</u><u>X</u><u>U</u><u>0</u>-600</b>
Option	7 Blades/12V/1200r.p.m/25dB	NTSP650 <u>X</u> <u>P</u> <u>S</u> 9A-GG <u>X</u> <u>X</u> <u>U</u> <u>F</u> -600

## Accessories

Item	Description	Quantity
HDMI Cable	HDMI Male to Male, 1.8 Meter	1
Power Cord	*Country Specific	1
USB Cable	A type, Male to Male, 1.5 Meter*(Touch Type Only)	1

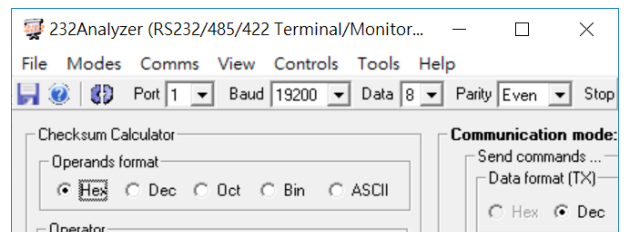
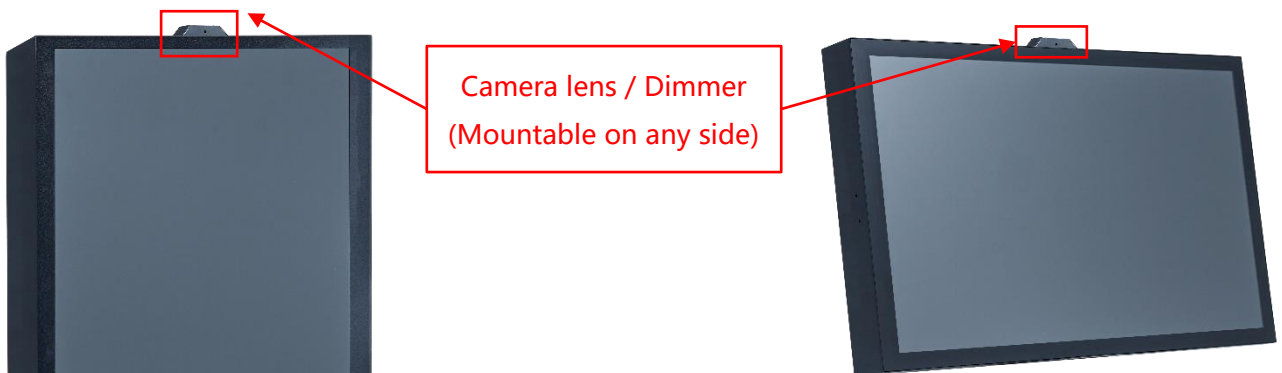
## Input /Output



Input / Output	Amount	Input / Output	Amount
HDMI Input	2	USB 2.0 Interface	1
VGA Input	1	RS232	Option
DisplayPort Input	2	Speakers	10Wx2
Audio Input (3.5mm)	1	Light Sensor	Option
AC Power Input (C14)	1	External Camera Lens	Option

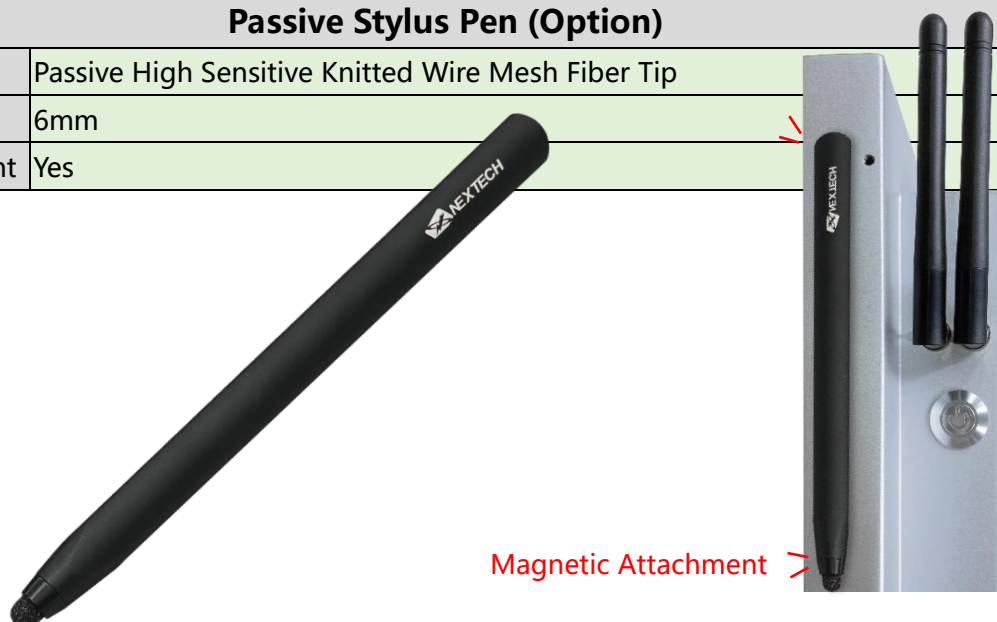
## Other Options

OSD Control		
	Item	Description
<b>Standard</b>	<b>Button</b>	<b>Rear Physical Button</b>
Option	Software Remote Control	Software Remote Control by RS232/Serial Port
Option	Auto Dimming	Auto Brightness Adjusting by Light Sensor
Option	Camera lens	12 million pixels, maximum resolution of 3840x3104.
Option	Stylus pen	Specifications are as follows in the table.

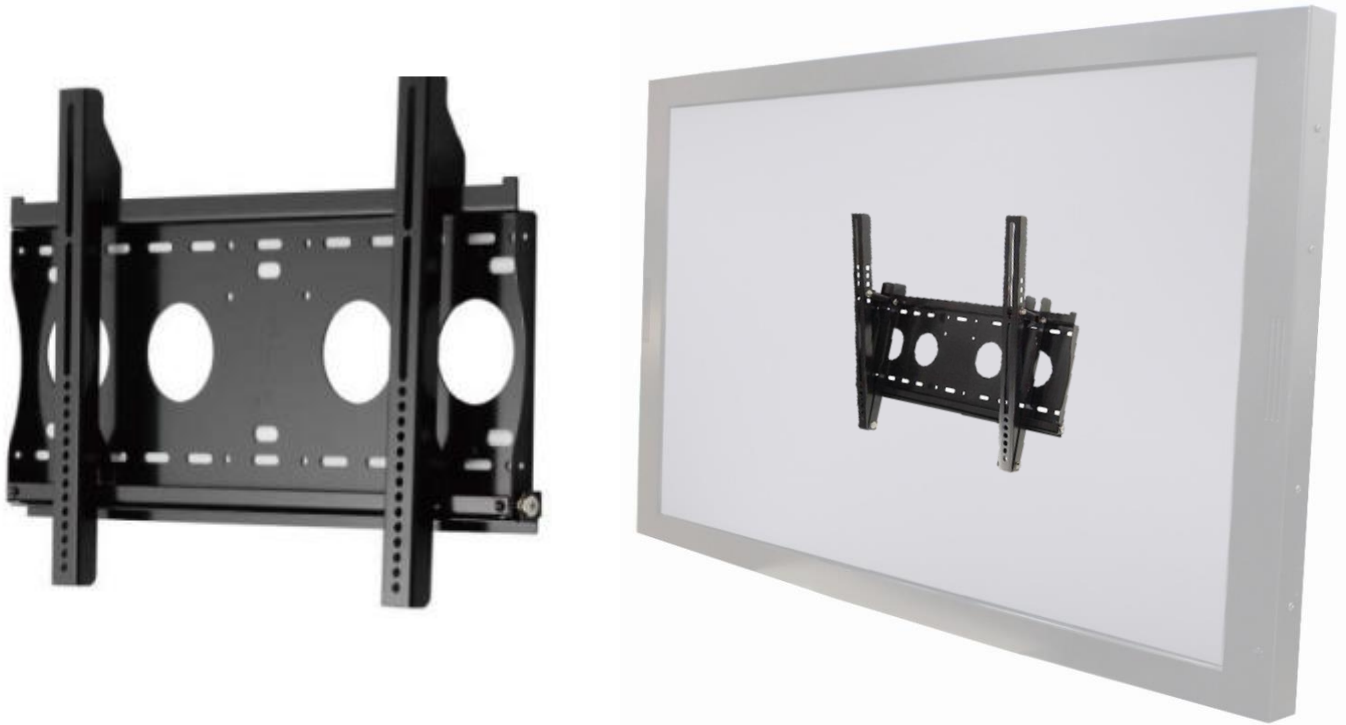


\* Software Remote

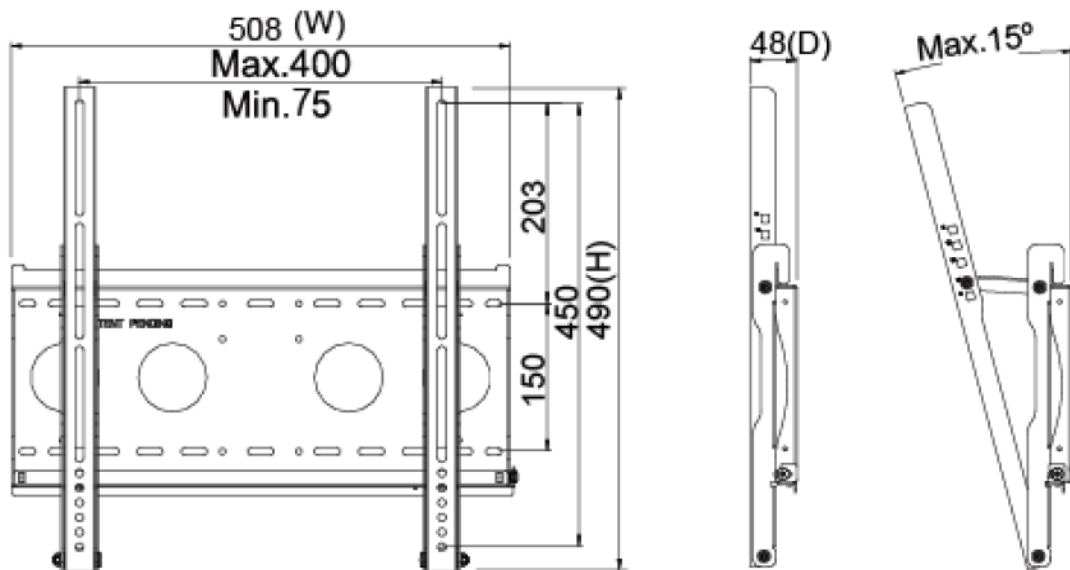
Passive Stylus Pen (Option)	
Technology	Passive High Sensitive Knitted Wire Mesh Fiber Tip
Size of tip	6mm
Magnetic Attachment	Yes



**Wall Mount Bracket (Option)**



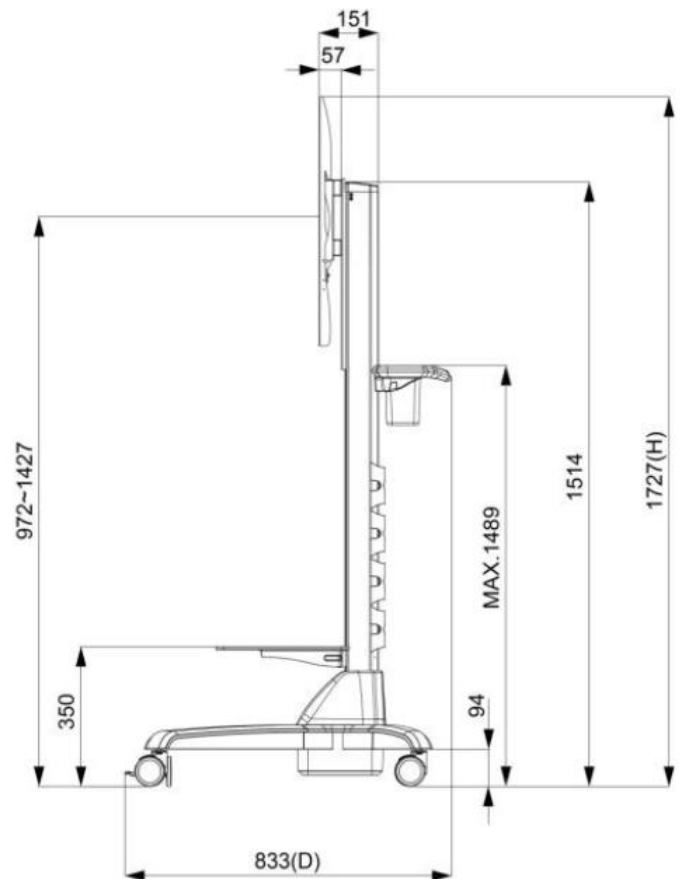
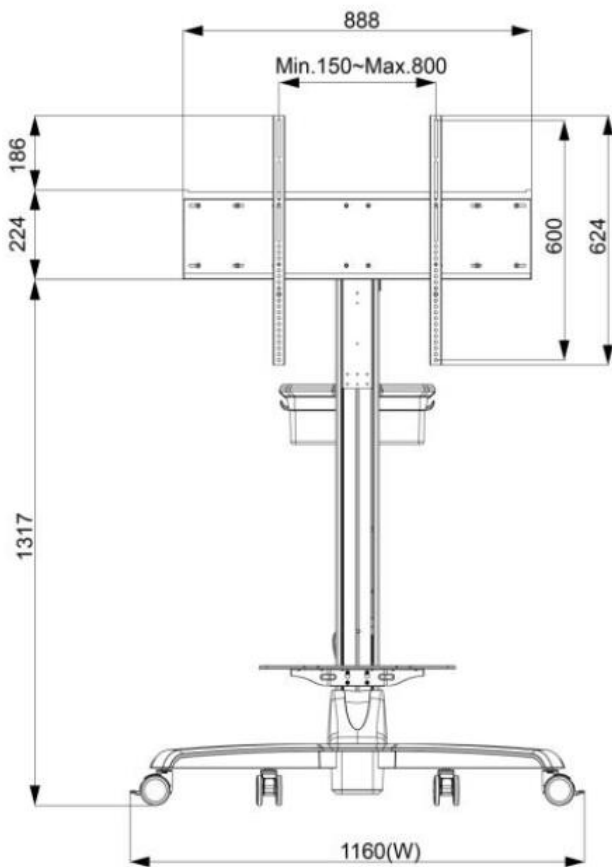
Part No.	WMB-B001		
Mounting Pattern	Max. 400x450 mm	Mounting Pattern	Max. 400x450 mm
Material	SECC	Material	SECC
Tilt (Hinge)	0°/5°/10°/13°/15°	Tilt (Hinge)	0°/5°/10°/13°/15°
Screw Type	M4/M5/M6/M8	Screw Type	M4/M5/M6/M8



**Cart (Option)**



Net Weight	28.4 KG
Power System	AC 200~240V 50/60Hz
User Interface	Button (up/down)
Packaged Dimension	W1160xD833xH1727 mm
Screw Type	M4/M5/M6/M8
Material	Aluminum/Plastic/Steel
Max. Mount Pattern	800x600mm
Max. Weight Load	80 KG
Caster	4 (front 2 braking)
Height Adjust Range	455 mm
RoHS/REACH	Yes





**KIOSK Cabinet (Option)**

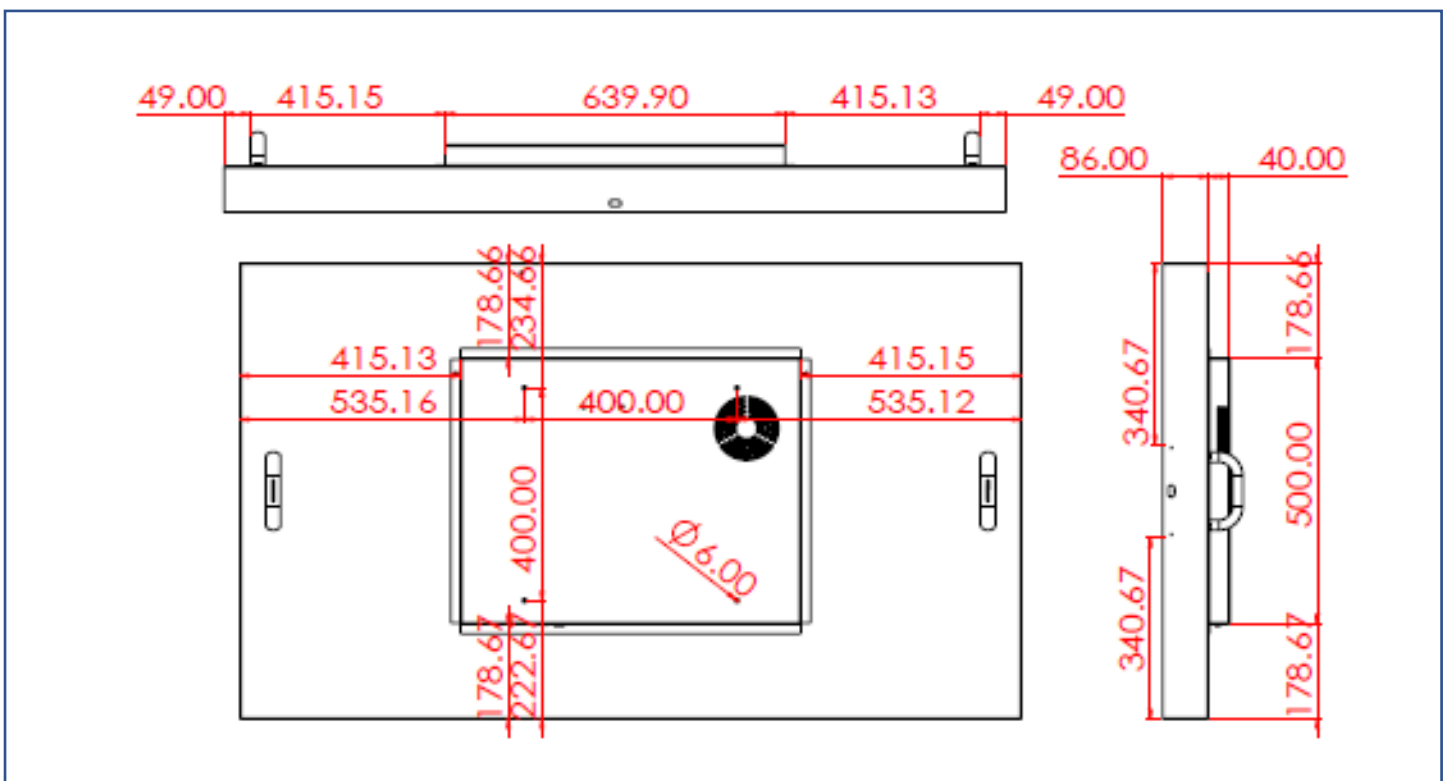
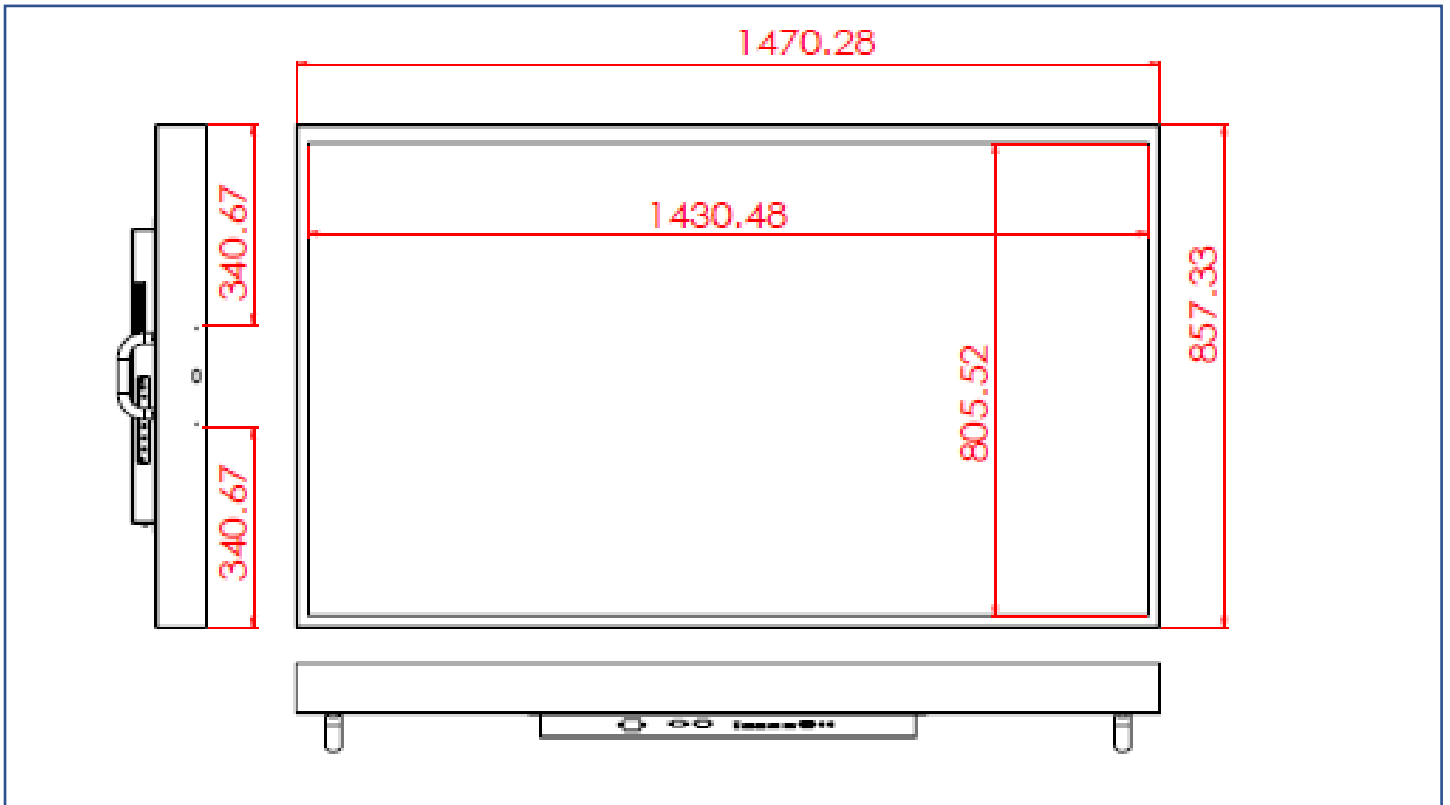


Material	SECC
Caster	4 (front 2 braking)
Ingress Protection	Front IP65
Power Socket	None (Wire Hole Reserved)



## Physical Specifications

Dimension (Max)	<b>1470x857x126(±2)mm</b>	Net Weight	≤ <b>62.0 KG</b>
VESA Mounting	<b>400x400 mm</b>	Gross Weight	≤ <b>73.0 KG</b>



## Packing Information



Dimensions of Carton	<b>168x111x36 CM</b>
Net Weight	<b>≤ 62.0 KG</b>
Gross Weight	<b>≤ 73.0 KG</b>