

# Product Specifications

<b>Customer</b>	
<b>Model</b>	<b>NTSI650-2 V600</b>



Records of Revision			
Vision	Modifying	Old Description	New Description
v2407.1	Preliminary Specifications		

## Features

- ★ 65 inch Industrial Grade Panel, 4K (UHD) Resolution
- ★ 700nits High Brightness
- ★ VA Wide Viewing Angel 178°/178°
- ★ Optional I.R. Touch
- ★ 20 points Multi-touch, 7H Hardness Tempered Cover Glass
- ★ Metal Cabinet with Diverse Combine Options
- ★ Made in Taiwan, 3 Years Warranty
- ★ Optional Software Remote Control by RS232
- ★ Optional Auto Dimming Function (with Light Sensor)
- ★ Optional 12M pixel camera



PSE



BSMI



RoHS



CE



ISO9001



FCC



Wall Mounting



Cart



KIOSK Cabinet

## Display Specifications

Model Name	<b>NTSI650HX29A-XXXXXX-600*</b>	Display Mode	<b>Normally Black</b>
Screen Diagonal	<b>65 inch</b>	Response Time	<b>8 msec.</b>
Display Area	<b>1428.5x803.5 mm</b>	Backlight Unit	<b>LED (white LED)</b>
Resolution	<b>3840x2160 (UHD)</b>	Viewing Angle (L/R, U/D)	<b>178°/178° (CR=10)</b>
Contrast Ratio	<b>5000:1</b>	Backlight Lifetime	<b>&gt;50,000 Hours</b>
Display Ratio	<b>16:9</b>	Operating Temp.	<b>0~50°C</b>
Support Colors	<b>1070M Colors</b>	Storage Temp.	<b>-20~60°C</b>
Pixel Pitch	<b>0.124x0.372 mm</b>	Brightness	<b>700nits</b>

\* X = A~Z, 0~9 (Depends on options)

## Accessories

Item	Description	Quantity
HDMI Cable	<b>HDMI Male to Male, 1.8 Meter</b>	<b>1</b>
Power Cord	<b>*Country Specific</b>	<b>1</b>
USB Cable	<b>A type, Male to Male, 1.5 Meter*</b>	<b>1</b>

## Touch Options

Touch Screen		
	Description	Model Name
<b>Standard</b>	<b>I.R. Touch</b>	<b>NTSI650H<u>I</u>29A-XXXX<u>U</u>X-600</b>
Option	Non-Touch	NTSI650H <u>0</u> 29A-XXXX <u>0</u> X-600

## I.R Touch Specifications

I.R. Touch			
Touch Technology	I.R. Touch	Transparency	≥92%
Allowed Touch Points	20 points	Accuracy	99.00%
Interface	USB	Thickness of Cover Lens	4.0±0.2mm
IK Ratings	IK07	Hardness of Cover Lens	7H

Surface Treatment		
	Description	Model Name
<b>Standard</b>	<b>(none)</b>	<b>NTSI650HX<u>2</u>9A-<u>00</u>XXXX-600</b>
Option	Anti-Glare Coating	NTSI650HX <u>2</u> 9A- <u>GG</u> XXXX-600

## Supported OS

Windows	<b>Win7, Win8, Win10, Win11 ↑</b>
Linux	<b>Kernel 2.6.24 ↑</b>
Android	<b>3.0 ↑</b>
Mac	<b>10.5.x ↑ (Intel CPU)</b>

## General Options

Color of Cabinet		
	Description	Model Name
<b>Standard</b>	<b>Black</b>	<b>NTSI650HX29A-XXBXXX-600</b>
Option 1	White	NTSI650HX29A-XXWXXX-600
Option 2	Silver	NTSI650HX29A-XXSXXX-600
Options	Other Colors	NTSI650HX29A-XXXXXX-600

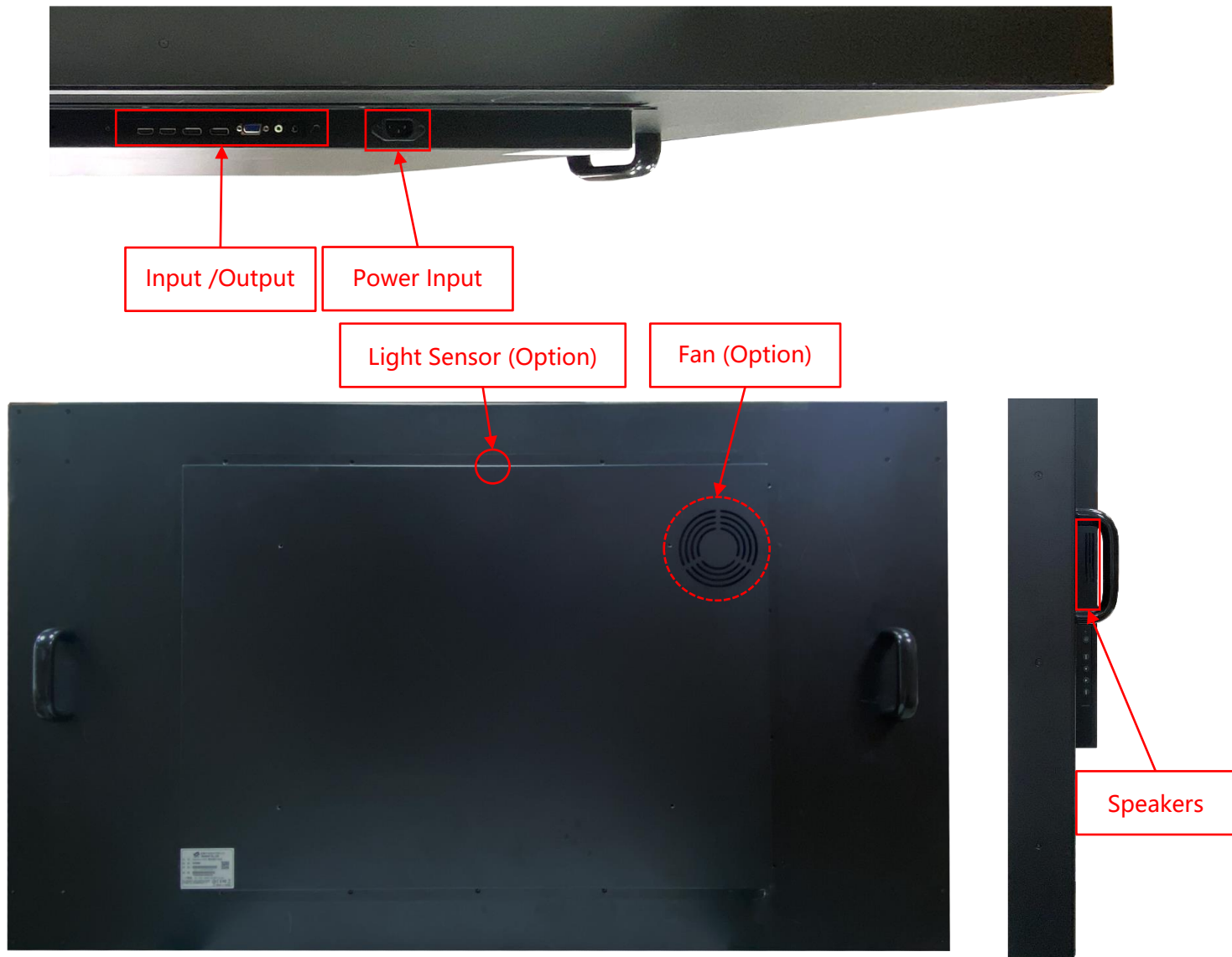
\* X = A~Z, 0~9 (Depends on Color)

Material of Cabinet		
	Description	Model Name
<b>Standard</b>	<b>SECC</b>	<b>NTSI650HX29A-XXXSXX-600</b>
Option 1	Stainless Steel	NTSI650HX29A-XXXLXX-600
Option 2	Aluminum	NTSI650HX29A-XXXAXX-600

Touch Interface		
	Description	Model Name
<b>Standard</b>	<b>USB</b>	<b>NTSI650HI29A-XXXXUX-600</b>
Option	Non-Touch	NTSI650H029A-XXXX0X-600

Cooling Fan		
	Description	Model Name
<b>Standard</b>	<b>Fanless</b>	<b>NTSI650XIS9A-XXXXX0-600</b>
Option	7 Blades/12V/1200r.p.m/25dB	NTSI650X0S9A-XXXXXF-600

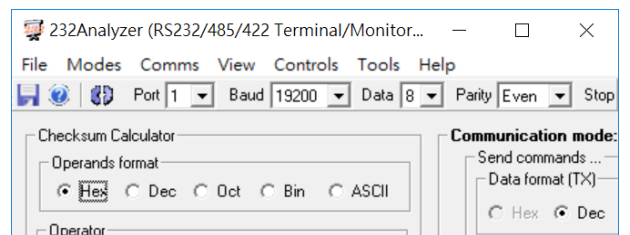
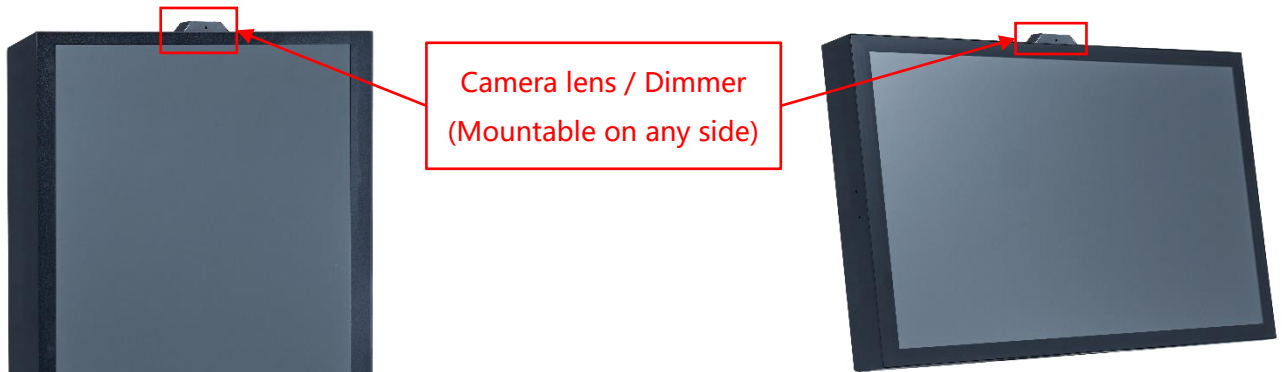
## Input /Output



Input / Output	Connectors	Input / Output	Connectors
HDMI Input	2	USB 2.0 Interface	1
VGA Input	1	RS232	Option
DisplayPort Input	2	Speakers	10Wx2
Audio Input (3.5mm)	1	Light Sensor	Option
AC Power Input (C14)	1		

## Other Options

OSD Control		
	Item	Description
<b>Standard</b>	<b>Button</b>	<b>Rear Physical Button</b>
Option	Software Remote Control	Software Remote Control by RS232/Serial Port
Option	Auto Dimming	Auto Brightness Adjusting by Light Sensor
Option	Camera lens	12 million pixels, maximum resolution of 3840x3104.



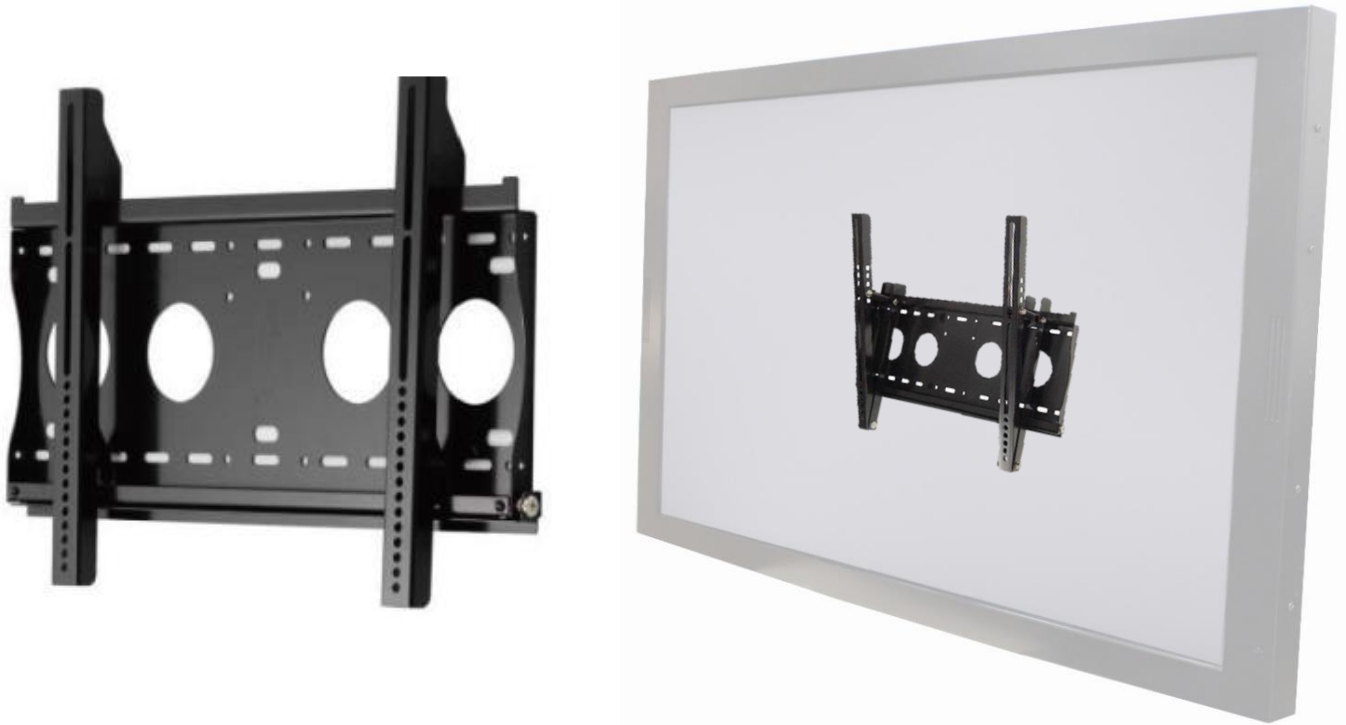
\* Software Remote

## Packing Information

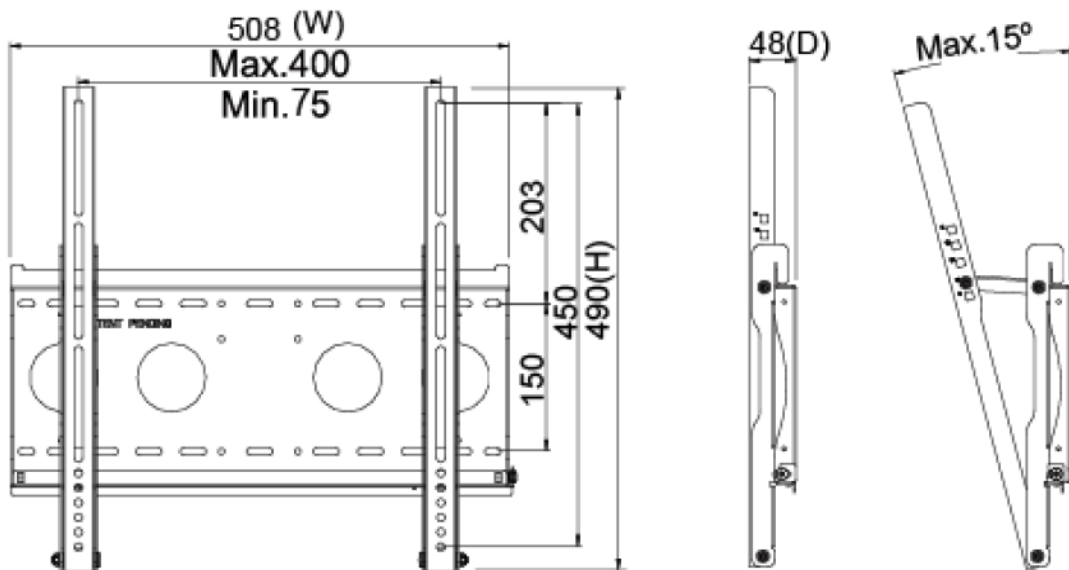


Dimensions of Carton	<b>168x111x36 CM</b>
Net Weight	<b>≤ 71 KG</b>
Gross Weight	<b>≤ 95 KG</b>

**Wall Mount Bracket (Option)**



Part No.	WMB-B001		
Mounting Pattern	Max. 400x450 mm	Dimension (WxHxD)	508x490x48 mm
Material	SECC	Net Weight	4.01 KG
Tilt (Hinge)	0°/5°/10°/13°/15°	Support Max. Weight	80 KG
Screw Type	M4/M5/M6/M8	Min. Distance to The Wall	48 mm





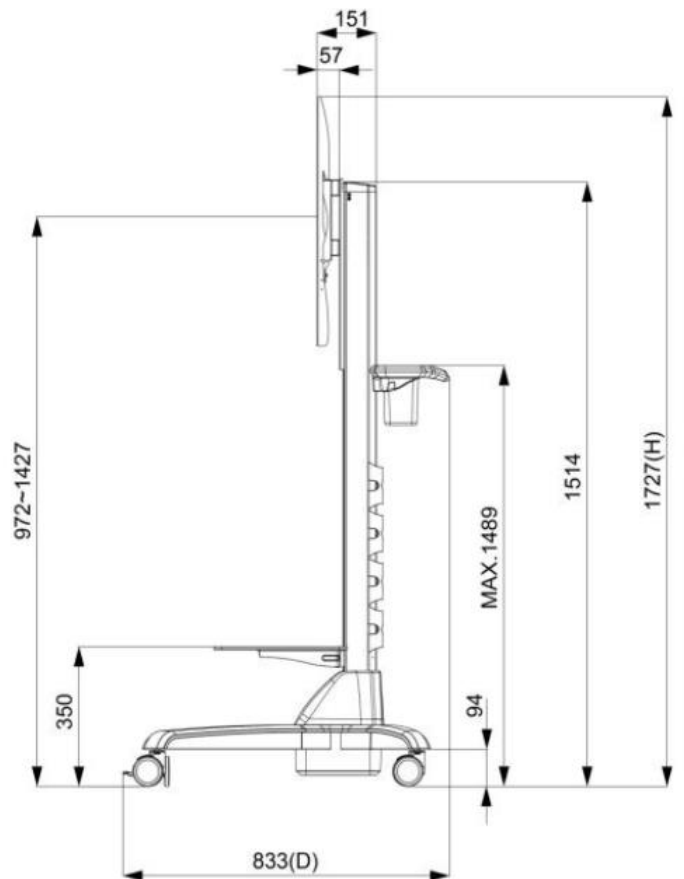
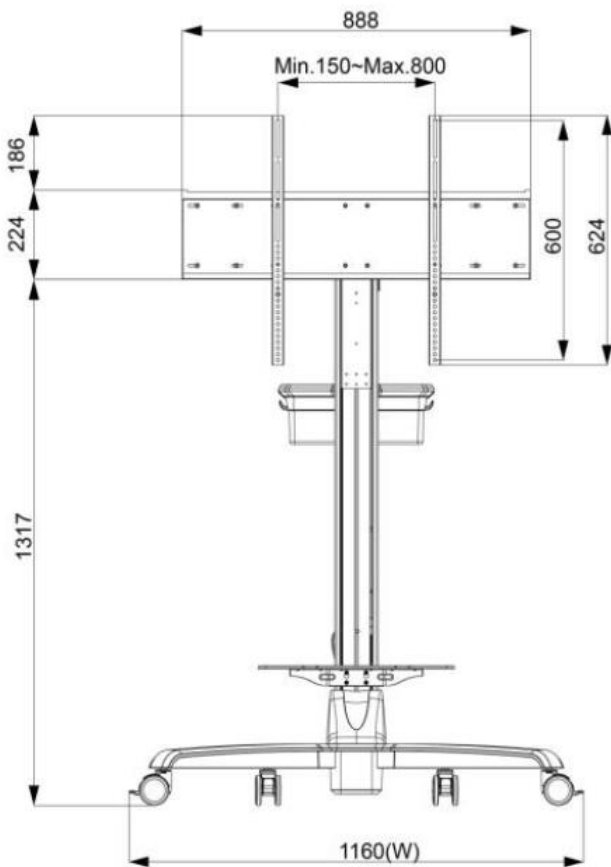
# Nextech I Series 65" Industrial Display/Touch Display

**NTSI650-2 V600**

## Cart (Option)



Net Weight	28.4 KG
Power System	AC 200~240V 50/60Hz
User Interface	Button (up/down)
Packaged Dimension	W1545xD383xH392 mm
Screw Type	M4/M5/M6/M8
Material	Aluminum/Plastic/Steel
Max. Mount Pattern	800x600mm
Max. Weight Load	80 KG
Caster	4 (front 2 braking)
Height Adjust Range	455 mm
RoHS/REACH	Yes



**KIOSK Cabinet (Option)**



Material	SECC
Caster	4 (front 2 braking)
Ingress Protection	Front IP65
Power Socket	None (Wire Hole Reserved)



## Physical Specifications

Dimension (Max)	<b>1500x875x125(±2)mm</b>	Net Weight	≦ <b>71 KG</b>
VESA Mounting	<b>400x400 mm</b>	Gross Weight	≦ <b>95 KG</b>

