

# Product Specifications

<b>Customer</b>	
<b>Model</b>	<b>NTSI650-1 V600</b>



Records of Revision			
Vision	Modifying	Old Description	New Description
v2407.1	Preliminary Specifications		

## Features

- ★ 65 inch Industrial Grade Panel, 4K (UHD) Resolution
- ★ VA Wide Viewing Angel 178°/178°
- ★ Optional I.R. Touch
- ★ 20 points Multi-touch, 7H Hardness Tempered Cover Glass
- ★ Metal Cabinet with Diverse Combine Options
- ★ Made in Taiwan, 3 Years Warranty
- ★ Optional High Brightness 700nits, for Outdoor Environment
- ★ Optional Software Remote Control by RS232
- ★ Optional Auto Dimming Function (with Light Sensor)
- ★ Optional 12M pixel camera



PSE



BSMI



RoHS



CE



ISO9001



FCC



Wall Mounting



Cart



KIOSK Cabinet

## Display Specifications

Model Name	NTSI650XXS9A-XXXXXX-600*	Display Mode	Normally Black
Screen Diagonal	65 inch	Response Time	9.5 msec.
Display Area	1428.5x803.5 mm	Backlight Unit	LED (white LED)
Resolution	3840x2160 (UHD)	Viewing Angle (L/R, U/D)	178°/178° (CR=10)
Contrast Ratio	5000:1	Backlight Lifetime	>50,000 Hours
Display Ratio	16:9	Operating Temp.	0~50°C
Support Colors	1070M Colors	Storage Temp.	-20~60°C
Pixel Pitch	0.124x0.372 mm		

\* X = A~Z, 0~9 (Depends on options)

## Display Options

Brightness			
	Brightness	Environment	Model Name
Standard	500nits	General	NTSI650NXS9A-XXXXXX-600
Option	700 nits	Outdoor Environment	NTSI650HX29A-XXXXXX-600

\* Check the data sheet NTSI650-2 V600

## Accessories

Item	Description	Quantity
HDMI Cable	HDMI Male to Male, 1.8 Meter	1
Power Cord	*Country Specific	1
USB Cable	A type, Male to Male, 1.5 Meter*	1

## Touch Options

Touch Screen		
	Description	Model Name
<b>Standard</b>	<b>I.R. Touch</b>	<b>NTSI650XIS9A-XXXXUX-600</b>
Option	Non-Touch	NTSI650XOS9A-XXXXOX-600

## I.R Touch Specifications

I.R. Touch			
Touch Technology	I.R. Touch	Transparency	≥92%
Allowed Touch Points	20 points	Accuracy	99.00%
Interface	USB	Thickness of Cover Lens	4.0±0.2mm
IK Ratings	IK07	Hardness of Cover Lens	7H

Surface Treatment		
	Description	Model Name
<b>Standard</b>	<b>(none)</b>	<b>NTSI650XXS9A-00XXXX-600</b>
Option	Anti-Glare Coating	NTSI650XXS9A-GGXXXX-600

## Supported OS

Windows	<b>Win7, Win8, Win10, Win11 ↑</b>
Linux	<b>Kernel 2.6.24 ↑</b>
Android	<b>3.0 ↑</b>
Mac	<b>10.5.x ↑ (Intel CPU)</b>

## General Options

Color of Cabinet		
	Description	Model Name
<b>Standard</b>	<b>Black</b>	<b>NTSI650XXS9A-XXBXXX-600</b>
Option 1	White	NTSI650XXS9A-XXWXXX-600
Option 2	Silver	NTSI650XXS9A-XXSXXX-600
Options	Other Colors	NTSI650XXS9A-XXXXXX-600

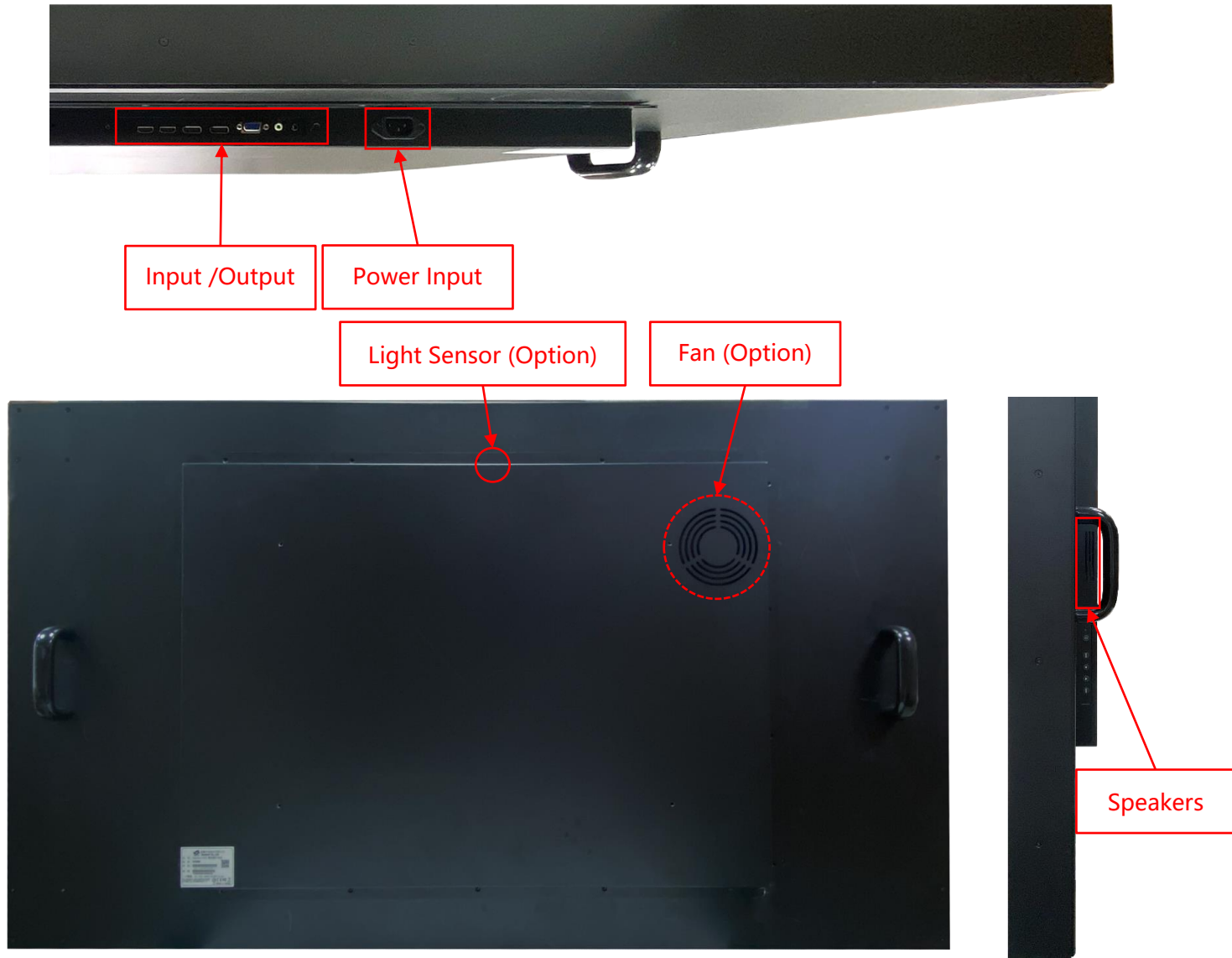
\* X = A~Z, 0~9 (Depends on Color)

Material of Cabinet		
	Description	Model Name
<b>Standard</b>	<b>SECC</b>	<b>NTSI650XXS9A-XXXSXX-600</b>
Option 1	Stainless Steel	NTSI650XXS9A-XXXLXX-600
Option 2	Aluminum	NTSI650XXS9A-XXXAXX-600

Touch Interface		
	Description	Model Name
<b>Standard</b>	<b>USB</b>	<b>NTSI650XIS9A-XXXXUX-600</b>
Option	Non-Touch	NTSI650X0S9A-XXXX0X-600

Cooling Fan		
	Description	Model Name
<b>Standard</b>	<b>Fanless</b>	<b>NTSI650XIS9A-XXXXX0-600</b>
Option	7 Blades/12V/1200r.p.m/25dB	NTSI650X0S9A-XXXXXF-600

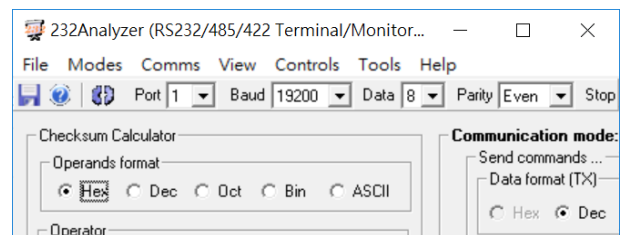
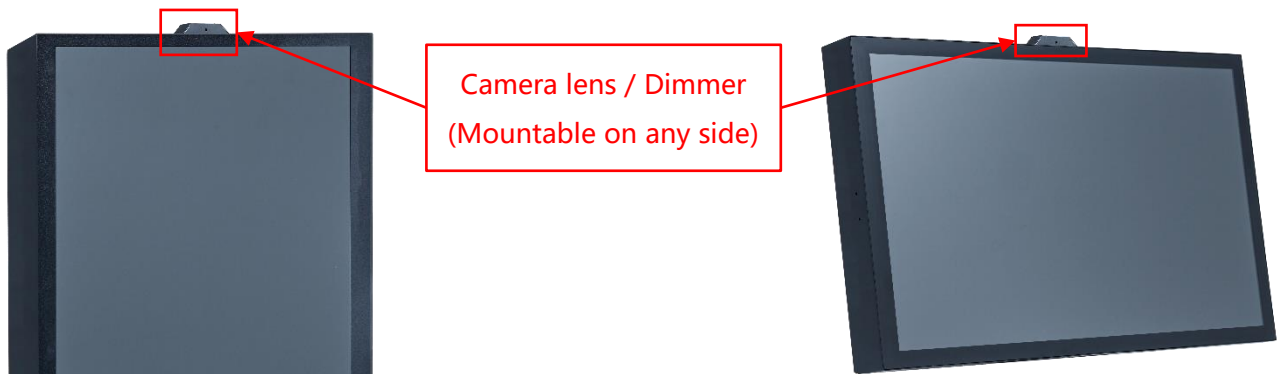
## Input /Output



Input / Output	Connectors	Input / Output	Connectors
HDMI Input	2	USB 2.0 Interface	1
VGA Input	1	RS232	Option
DisplayPort Input	2	Speakers	10Wx2
Audio Input (3.5mm)	1	Light Sensor	Option
AC Power Input (C14)	1		

## Other Options

OSD Control		
	Item	Description
<b>Standard</b>	<b>Button</b>	<b>Rear Physical Button</b>
Option	Software Remote Control	Software Remote Control by RS232/Serial Port
Option	Auto Dimming	Auto Brightness Adjusting by Light Sensor
Option	Camera lens	12 million pixels, maximum resolution of 3840x3104.



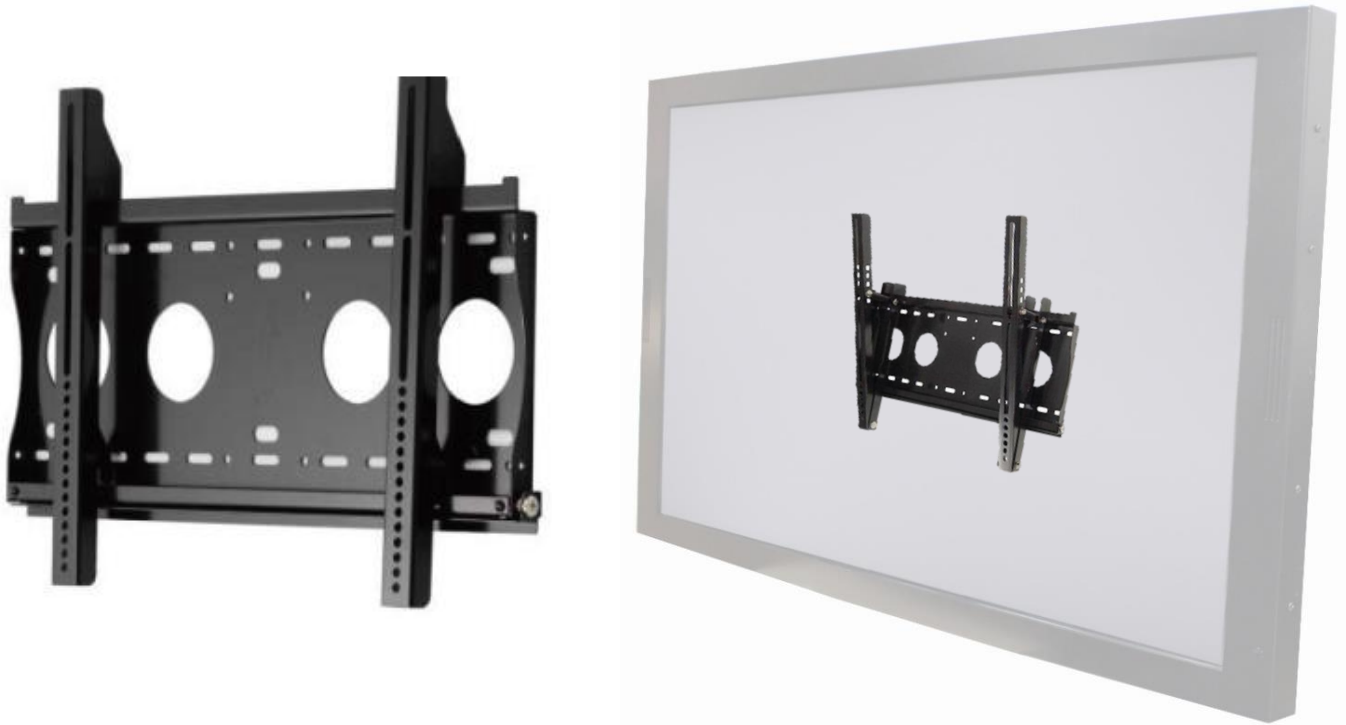
\* Software Remote

## Packing Information

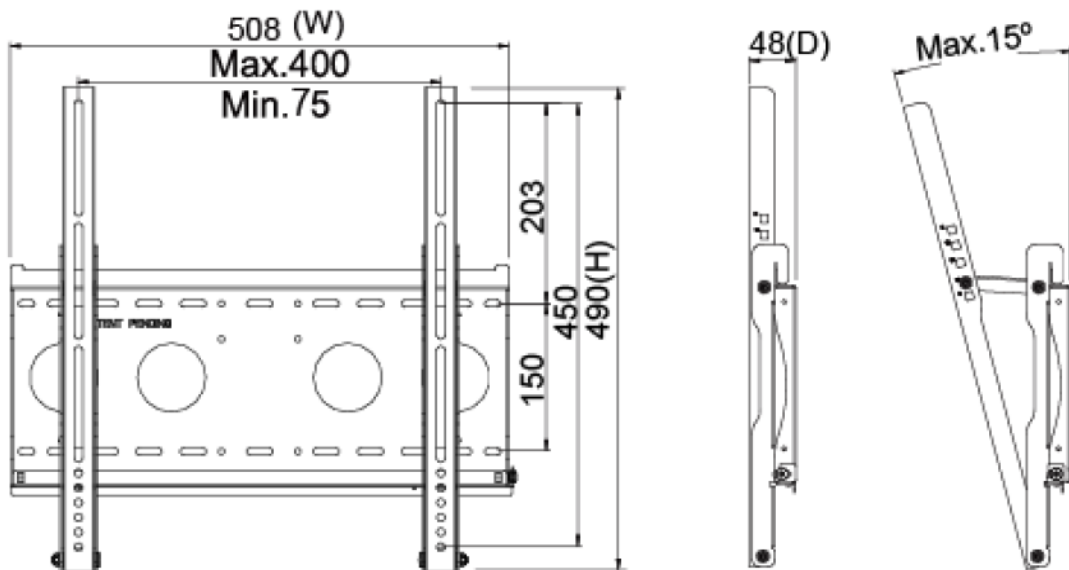


Dimensions of Carton	<b>168x111x36 CM</b>
Net Weight	<b>≤ 71 KG</b>
Gross Weight	<b>≤ 95 KG</b>

**Wall Mount Bracket (Option)**



Part No.	WMB-B001		
Mounting Pattern	Max. 400x450 mm	Dimension (WxHxD)	508x490x48 mm
Material	SECC	Net Weight	4.01 KG
Tilt (Hinge)	0°/5°/10°/13°/15°	Support Max. Weight	80 KG
Screw Type	M4/M5/M6/M8	Min. Distance to The Wall	48 mm





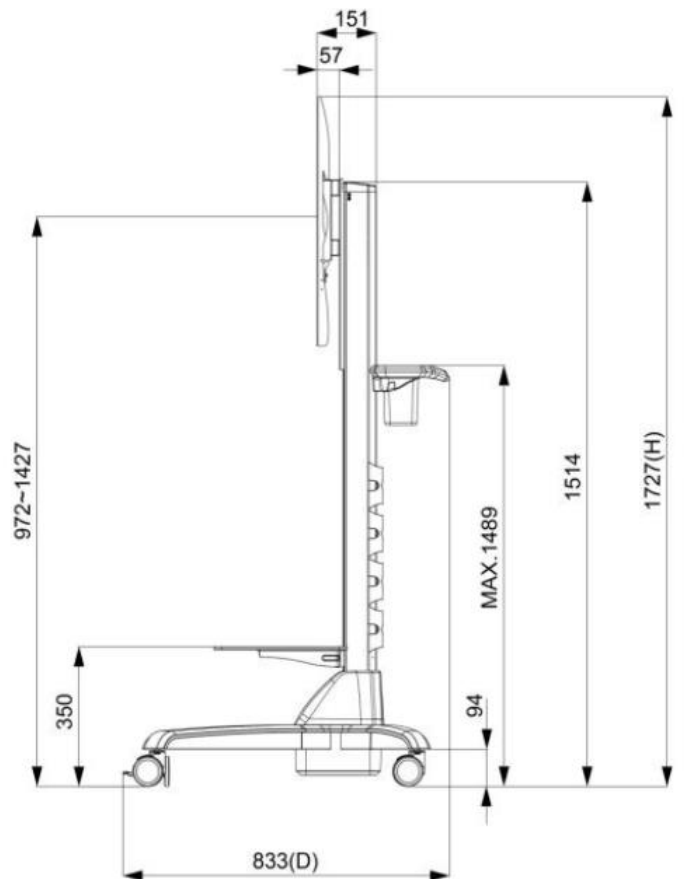
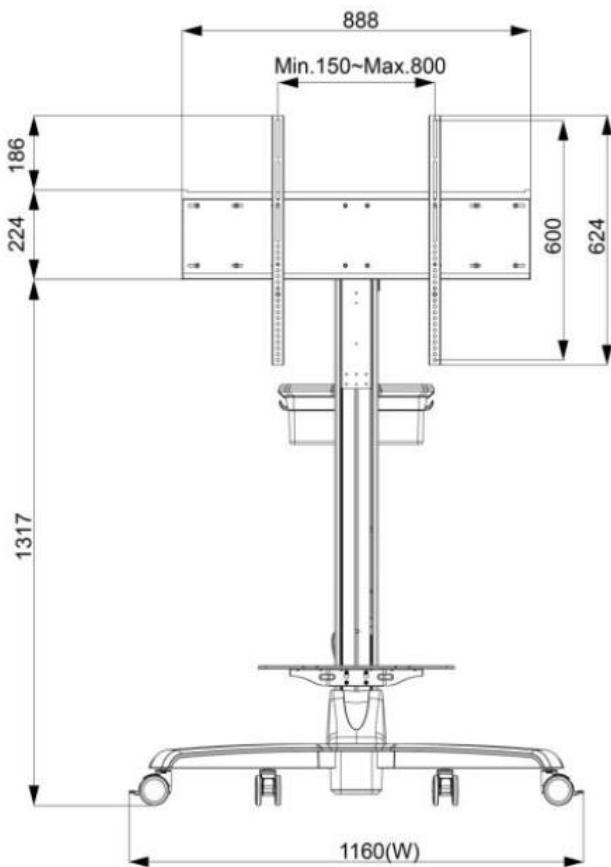
# Nextech I Series 65" Industrial Display/Touch Display

**NTSI650-1 V600**

## Cart (Option)



Net Weight	28.4 KG
Power System	AC 200~240V 50/60Hz
User Interface	Button (up/down)
Packaged Dimension	W1545xD383xH392 mm
Screw Type	M4/M5/M6/M8
Material	Aluminum/Plastic/Steel
Max. Mount Pattern	800x600mm
Max. Weight Load	80 KG
Caster	4 (front 2 braking)
Height Adjust Range	455 mm
RoHS/REACH	Yes



**KIOSK Cabinet (Option)**



Material	SECC
Caster	4 (front 2 braking)
Ingress Protection	Front IP65
Power Socket	None (Wire Hole Reserved)



## Physical Specifications

Dimension (Max)	<b>1500x875x125(±2)mm</b>	Net Weight	≦ <b>71 KG</b>
VESA Mounting	<b>400x400 mm</b>	Gross Weight	≦ <b>95 KG</b>

