

Product Specifications

Customer	
Model	NTSI550-3 V400



Records of Revision			
Vision	Modifying	Old Description	New Description
v1902.1	Preliminary Specifications		
v1902.2	Format Updated		
v1902.3	Add Color Options		
v1902.4	Revise the Dimensions of Carton		
v1902.5	Correction of Dimension		
v1902.6	New trademark released		

Features

- ★ 55 inch Industrial Grade Panel, 1920x1080 (FHD) Resolution
- ★ VA Wide Viewing Angel 178°/178°
- ★ Operating Temperature Range -20~60°C
- ★ 2500nits High Brightness
- ★ Optional I.R. Touch
- ★ 10 points Multi-touch, 7H Hardness Tempered Cover Glass
- ★ Metal Cabinet with Diverse Combine Options
- ★ Made in Taiwan, 3 Years Warranty, Designed for Harsh Environments
- ★ Optional Software Remote Control by RS232
- ★ Optional Auto Dimming Function (with Light Sensor)



PSE



BSMI



RoHS



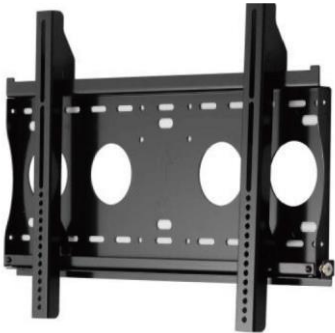
CE



ISO9001



FCC



Wall Mounting



Cart



KIOSK Cabinet

Display Specifications

Model Name	NTSI550HX-3XXXF8A-400*	Display Mode	VA Type, Normally Black
Screen Diagonal	55 inch.	Response Time	16 msec.
Display Area	1209.6x680.4 mm	Backlight Unit	LED (white LED)
Resolution	1920x1080 (FHD)	Viewing Angle (L/R, U/D)	178°/178° (CR=10)
Contrast Ratio	4000:1	Backlight Lifetime	>60,000 Hours
Display Ratio	16:9	Operating Temp.	-20~60°C
Support Colors	1073M Colors	Storage Temp.	-20~60°C
Pixel Pitch	0.63x0.63 mm	Brightness	2500nits

* X = A~Z, 0~9 (Depends on options)

Touch Options

I.R. Touch			
Model Name	NTSI55H!-3XUXF8A-400		
Touch Technology	I.R. Touch	Transparency	≥92%
Allowed Touch Points	10 points	Accuracy	99.00%
Interface	USB	Thickness of Cover Lens	4.0±0.2mm
IK Ratings	IK07	Hardness of Cover Lens	7H

Non-Touch	
Model Name	NTSI55H0-3XUXF8A-400

General Options

Color of Cabinet		
	Description	Model Name
Standard	Black	NTSI550HX-3BXXF8A-400
Option 1	White	NTSI550HX-3WXXF8A-400
Option 2	Silver	NTSI550HX-3SXXF8A-400
Options	Other Colors	NTSI550HX-3XXF8A-400

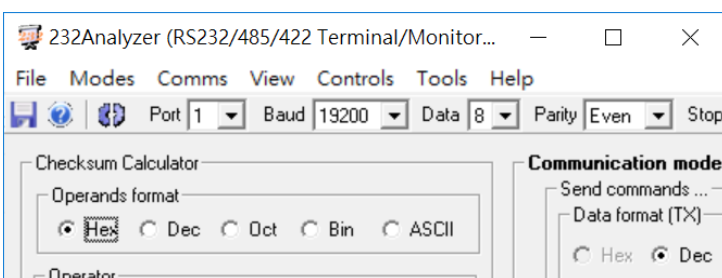
* X = A~Z, 0~9 (Depends on Color)

Touch Interface		
	Description	Model Name
Standard	USB	NTSI550HI-3XUXF8A-400
Option	Non-Touch	NTSI550H0-3X0XF8A-400

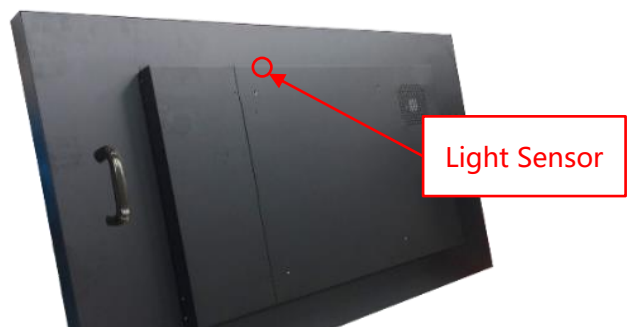
Material of Cabinet		
	Description	Model Name
Standard	SECC	NTSI550HX-3XXSF8A-400
Option 1	Stainless Steel	NTSI550HX-3XXLF8A-400
Option 2	Aluminum	NTSI550HX-3XXAF8A-400

Other Options

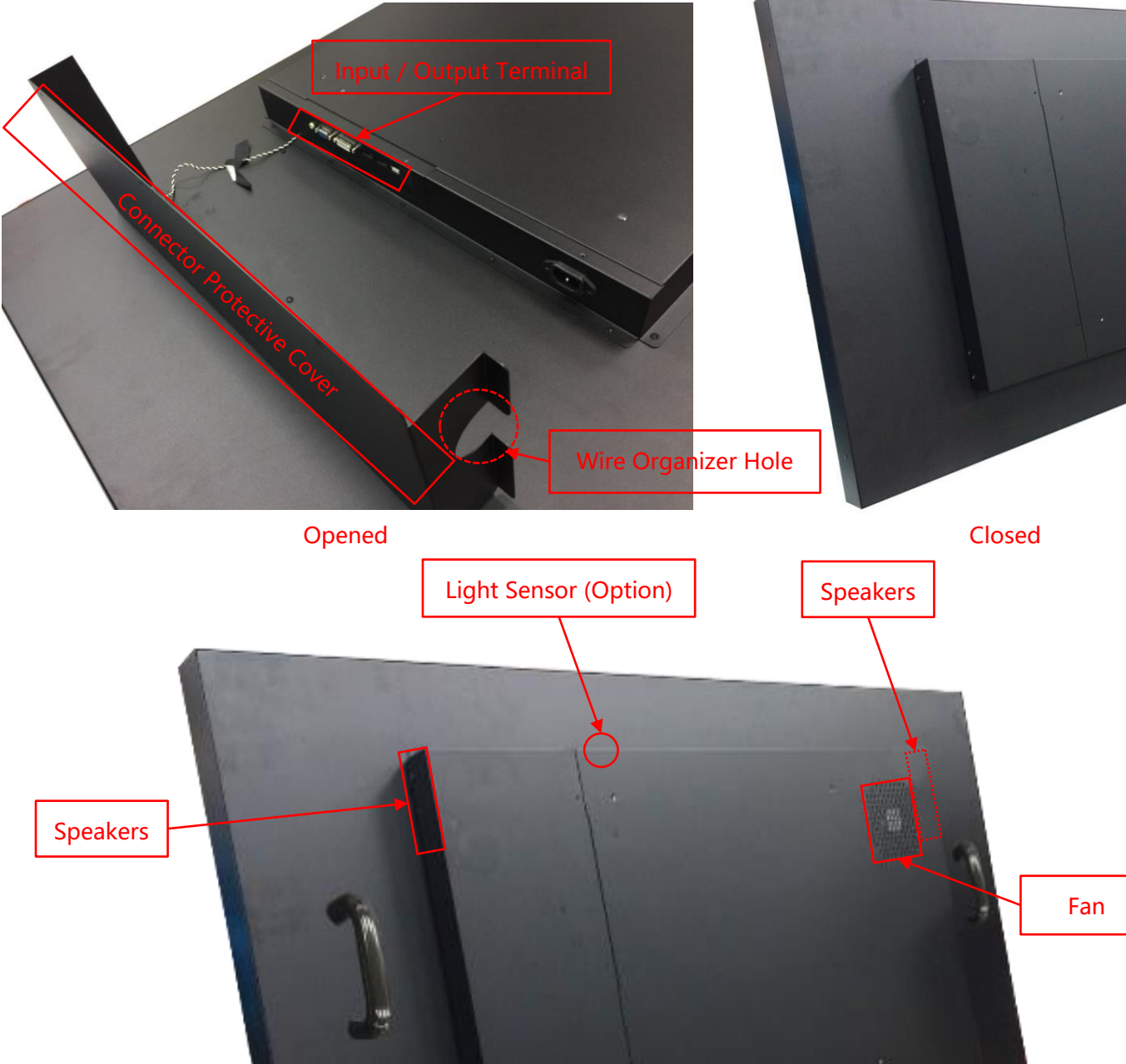
OSD Control		
	Item	Description
Standard	Button	Rear Physical Button
Option 1	Software Remote Control	Software Remote Control by RS232/Serial Port
Option 2	Auto Dimming	Auto Brightness Adjusting by Light Sensor



* Software Remote



Input /Output



Input / Output	Connectors	Input / Output	Connectors
VGA Input	1	USB 2.0 Interface	1
HDMI Input	1	Speakers	10Wx2
DisplayPort Input	1	RS232	Option
Audio Input (3.5mm)	1	Light Sensor	Option
AC Power Input (C14)	1		

Supported OS

Windows	Win7, Win8, Win10, Win11 ↑
Linux	Kernel 2.6.24 ↑
Android	3.0 ↑
Mac	10.5.x ↑ (Intel CPU)

Accessories

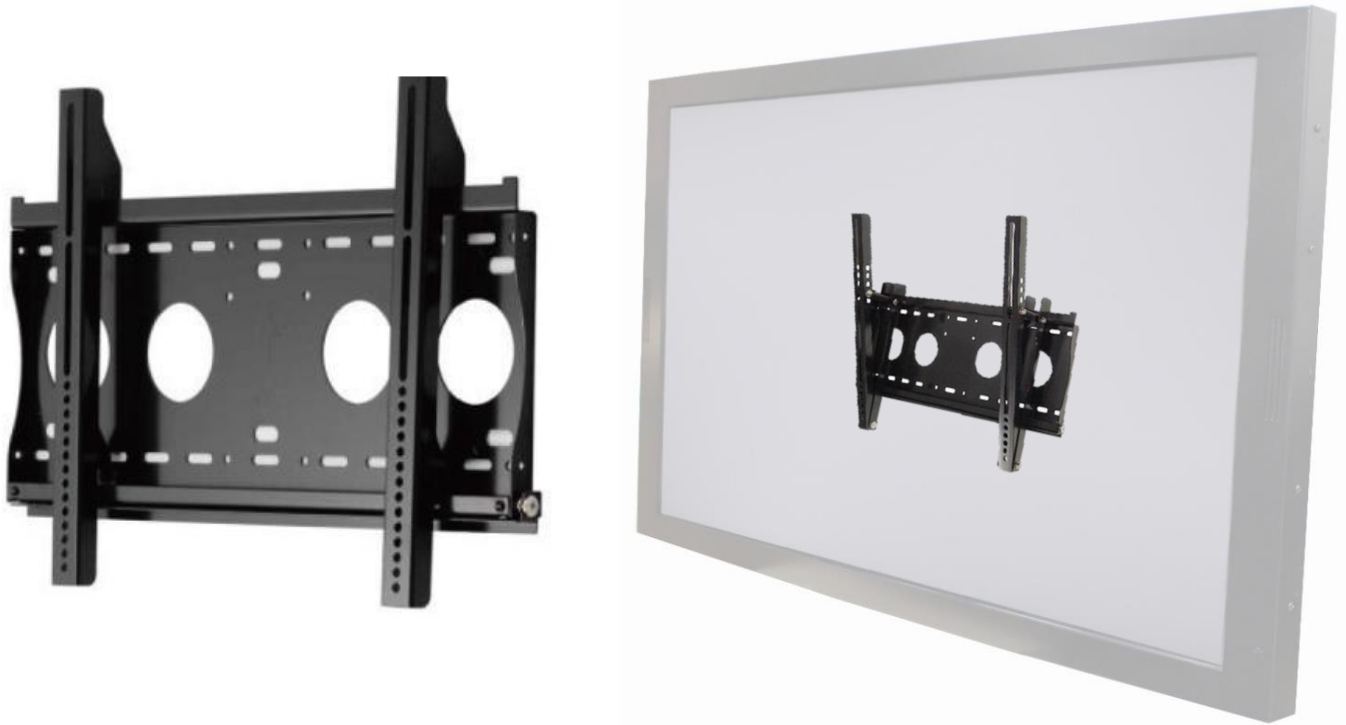
Item	Description	Quantity
HDMI Cable	HDMI Male to Male, 1.8 Meter	1
Power Cord	*Country Specific	1
USB Cable	A type, Male to Male, 1.5 Meter*	1

Packing Information

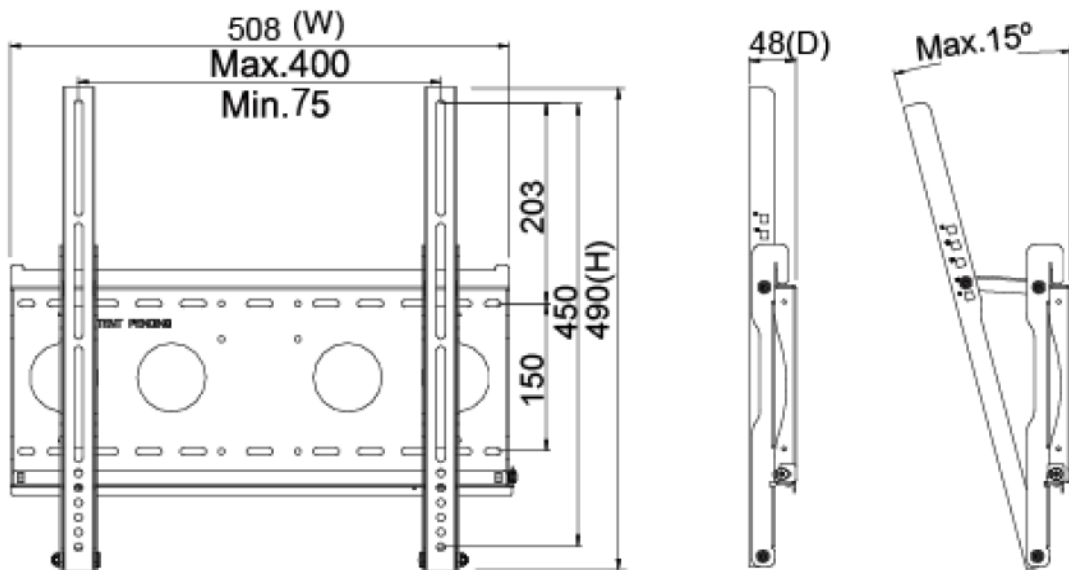


Dimensions of Carton	145.5x33x96 CM
Net Weight	≤55.1 KG
Gross Weight	≤62.7 KG

Wall Mount Bracket (Option)



Part No.	WMB-B001		
Mounting Pattern	Max. 400x450 mm	Dimension (WxHxD)	508x490x48 mm
Material	SECC	Net Weight	4.01 KG
Tilt (Hinge)	0°/5°/10°/13°/15°	Support Max. Weight	80 KG
Screw Type	M4/M5/M6/M8	Min. Distance to The Wall	48 mm



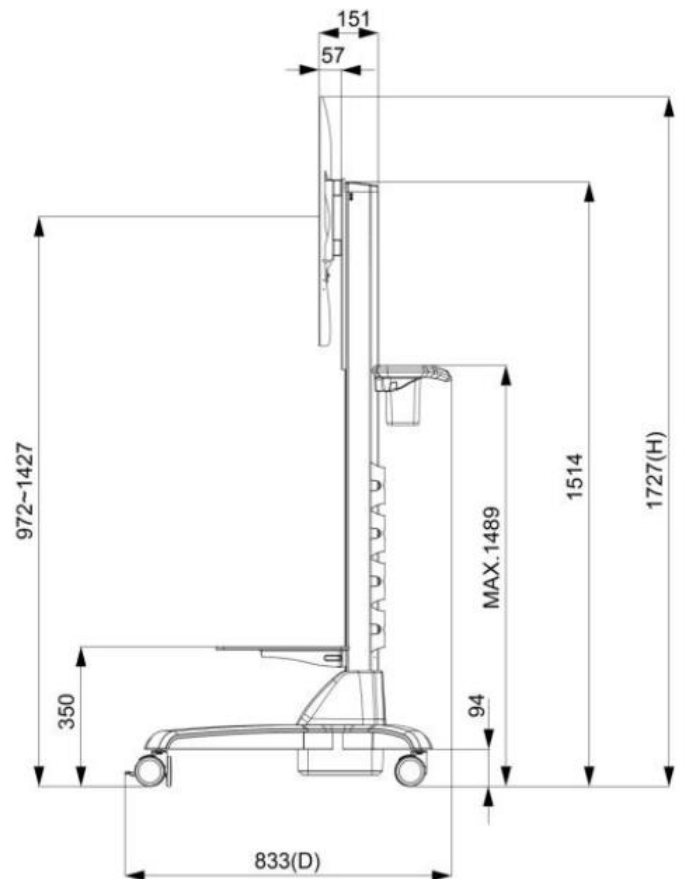
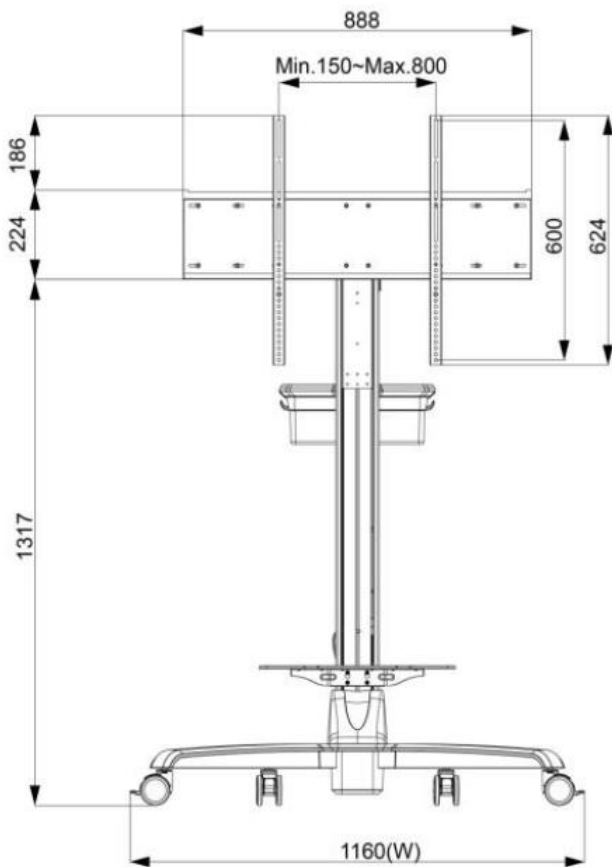
Nextech I Series 55" Industrial Display/Touch Display

NTSI550-3 V400

Cart (Option)



Net Weight	28.4 KG
Power System	AC 200~240V 50/60Hz
User Interface	Button (up/down)
Packaged Dimension	W1545xD383xH392 mm
Screw Type	M4/M5/M6/M8
Material	Aluminum/Plastic/Steel
Max. Mount Pattern	800x600mm
Max. Weight Load	80 KG
Caster	4 (front 2 braking)
Height Adjust Range	455 mm
RoHS/REACH	Yes



KIOSK Cabinet (Option)



Material	SECC
Caster	4 (front 2 braking)
Ingress Protection	Front IP65
Power Socket	None (Wire Hole Reserved)



Physical Specifications

Dimension (Max)	1280x745xD*(±1)mm	Net Weight	≦ 55.1 KG
VESA Mounting	400x400 mm	Gross Weight	≦ 62.7 KG

