

# Product Specifications

<b>Customer</b>	
<b>Model</b>	<b>NTSI550-2 V500</b>



Records of Revision			
Vision	Modifying	Old Description	New Description
v2112.1	Preliminary Specifications		
<b>v2112.2</b>	<b>New trademark released</b>		

Features

- ★ 55 inch Industrial Grade Panel, 4K (UHD) Resolution
- ★ VA Wide Viewing Angel 178°/178°
- ★ 700nits High Brightness
- ★ Optional I.R. Touch
- ★ 10 points Multi-touch, 7H Hardness Tempered Cover Glass
- ★ Metal Cabinet with Diverse Combine Options
- ★ Made in Taiwan, 3 Years Warranty
- ★ Optional Software Remote Control by RS232
- ★ Optional Auto Dimming Function (with Light Sensor)



Wall Mounting



Cart



KIOSK Cabinet

## Display Specifications

Model Name	<b>NTSI550HX29A-XXXXXX-500*</b>	Display Mode	<b>VA Type, Normally Black</b>
Screen Diagonal	<b>55 inch.</b>	Response Time	<b>8.5 msec.</b>
Display Area	<b>1209.6x680.4 mm</b>	Backlight Unit	<b>LED (white LED)</b>
Resolution	<b>3840x2160 (UHD)</b>	Viewing Angle (L/R, U/D)	<b>178°/178° (CR=10)</b>
Contrast Ratio	<b>4000:1</b>	Backlight Lifetime	<b>&gt;50,000 Hours</b>
Display Ratio	<b>16:9</b>	Operating Temp.	<b>0~50°C</b>
Support Colors	<b>1073M Colors</b>	Storage Temp.	<b>-20~60°C</b>
Pixel Pitch	<b>0.315x0.315 mm</b>	Brightness	<b>700nits</b>

\* X = A~Z, 0~9 (Depends on options)

## Touch Options

I.R. Touch			
Model Name	NTSI55H!29A-XXXXUX-500		
Touch Technology	I.R. Touch	Transparency	≥92%
Allowed Touch Points	10 points	Accuracy	99.00%
Interface	USB	Thickness of Cover Lens	4.0±0.2mm
IK Ratings	IK07	Hardness of Cover Lens	7H

Non-Touch	
Model Name	NTSI55H029A-XXXX0X-500

Surface Treatment		
	Description	Model Name
Standard	(none)	<b>NTSI550HX29A-00XXXX-500</b>
Option	Anti-Glare Coating	NTSI550HX29A- <b>GGXXXX</b> -500

## General Options

Color of Cabinet		
	Description	Model Name
<b>Standard</b>	<b>Black</b>	<b>NTSI550HX29A-XXBXXX-500</b>
Option 1	White	NTSI550HX29A-XXWXXX-500
Option 2	Silver	NTSI550HX29A-XXSXXX-500
Options	Other Colors	NTSI550HX29A-XXXXXX-500

\* X = A~Z, 0~9 (Depends on Color)

Material of Cabinet		
	Description	Model Name
<b>Standard</b>	<b>SECC</b>	<b>NTSI550HX29A-XXXSXX-500</b>
Option 1	Stainless Steel	NTSI550HX29A-XXXLXX-500
Option 2	Aluminum	NTSI550HX29A-XXXAXX-500

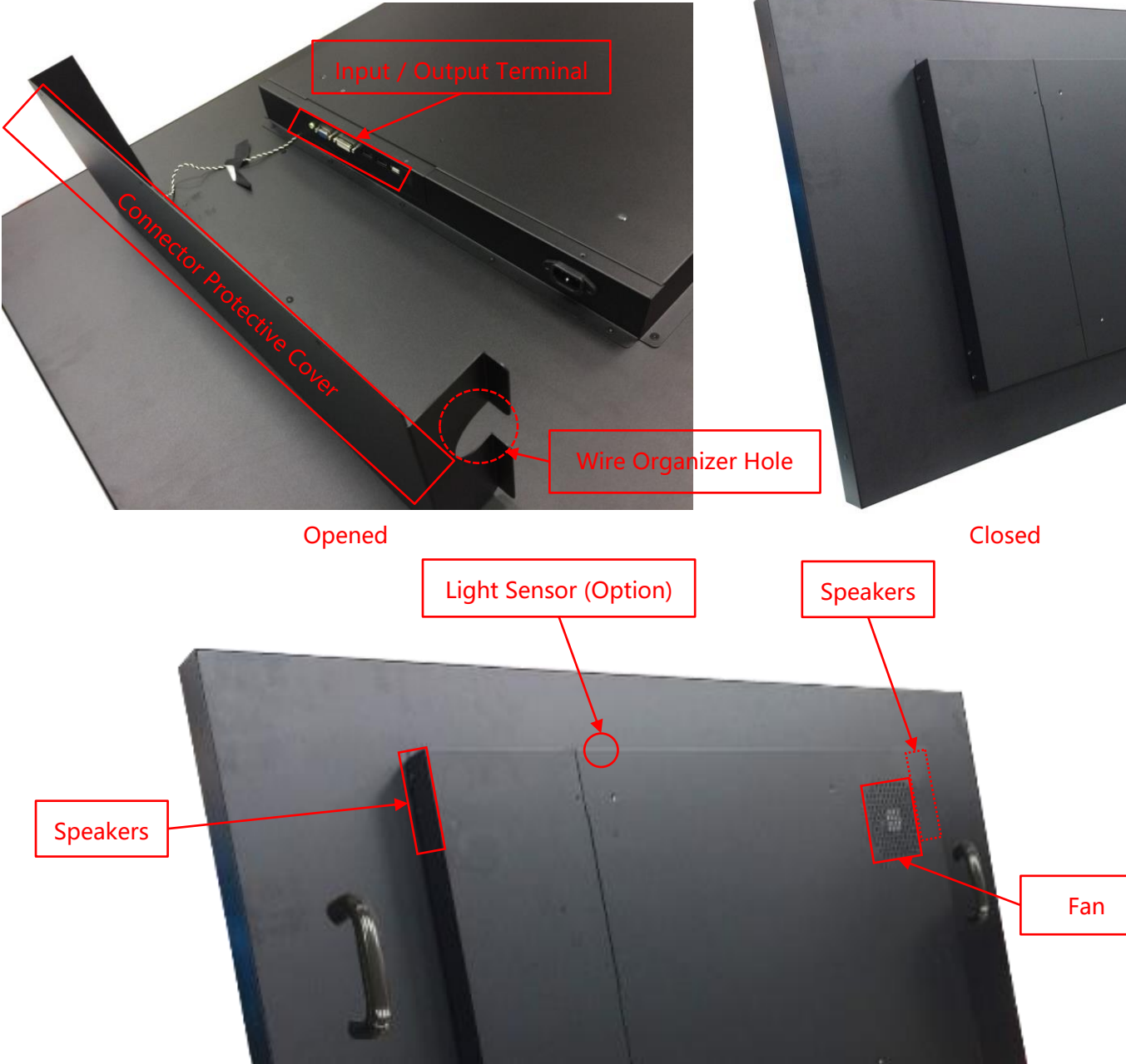
Touch Interface		
	Description	Model Name
<b>Standard</b>	<b>USB</b>	<b>NTSI550HX29A-XXXXUX-500</b>
Option	Non-Touch	NTSI550HX29A-XXXX0X-500

Cooling Fan		
	Description	Model Name
<b>Standard</b>	<b>Fanless</b>	<b>NTSI550HX29A-XXXXXF-500</b>
Option	7 Blades/12V/1200r.p.m/25dB	NTSI550HX29A-XXXXX0-500

## Accessories

Item	Description	Quantity
HDMI Cable	HDMI Male to Male, 1.8 Meter	1
Power Cord	*Country Specific	1
USB Cable	A type, Male to Male, 1.5 Meter*	1

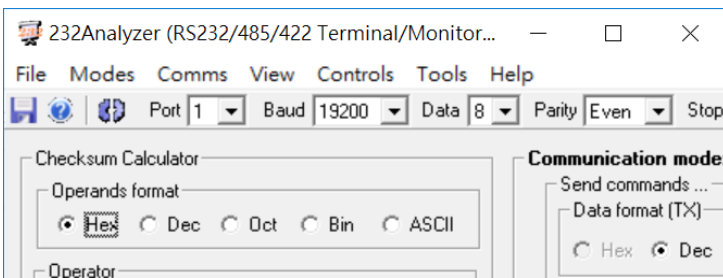
**Input /Output**



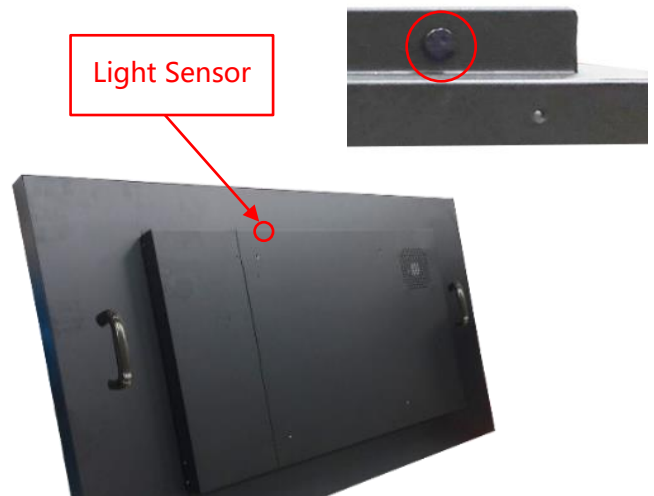
Input / Output	Connectors	Input / Output	Connectors
HDMI Input	2	USB 2.0 Interface	1
VGA Input	1	RS232	Option
DisplayPort Input	2	Speakers	10Wx2
Audio Input (3.5mm)	1	Light Sensor	Option
AC Power Input (C14)	1		

## Other Options

OSD Control		
	Item	Description
<b>Standard</b>	<b>Button</b>	<b>Rear Physical Button</b>
Option 1	Software Remote Control	Software Remote Control by RS232/Serial Port
Option 2	Auto Dimming	Auto Brightness Adjusting by Light Sensor



\* Software Remote

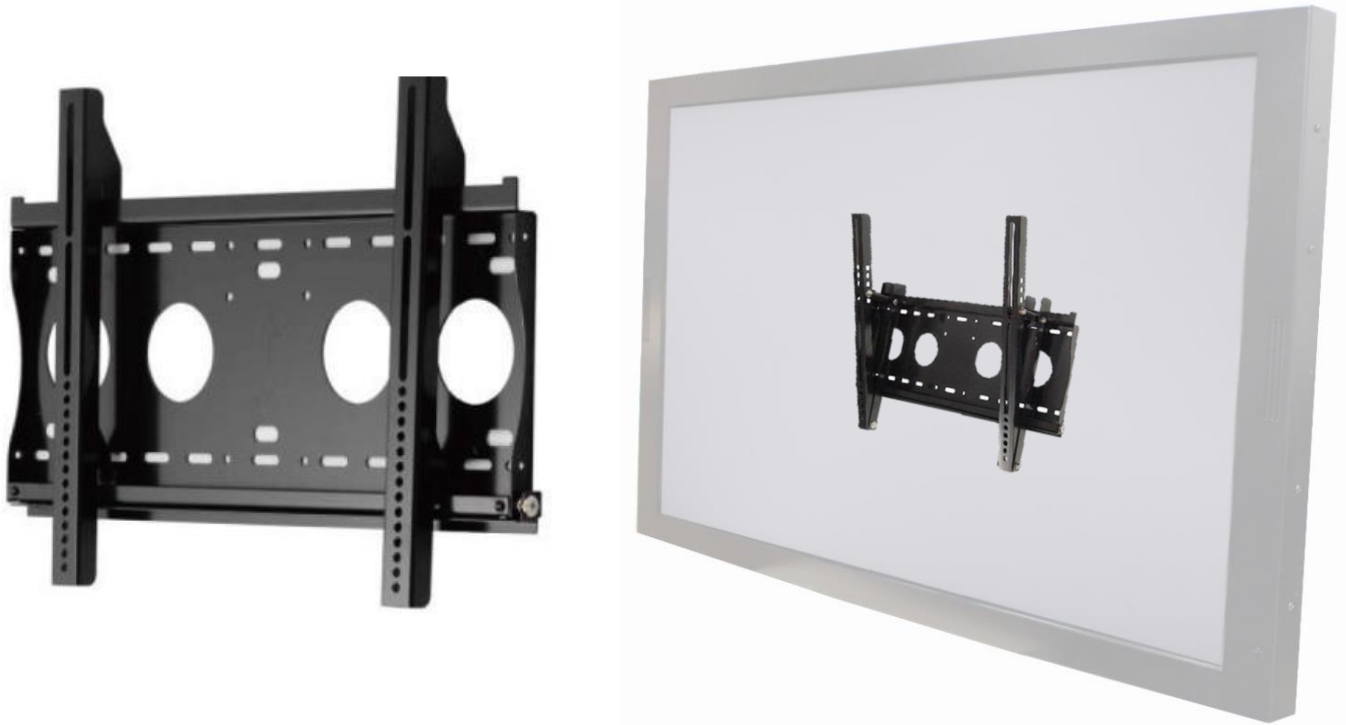


## Packing Information

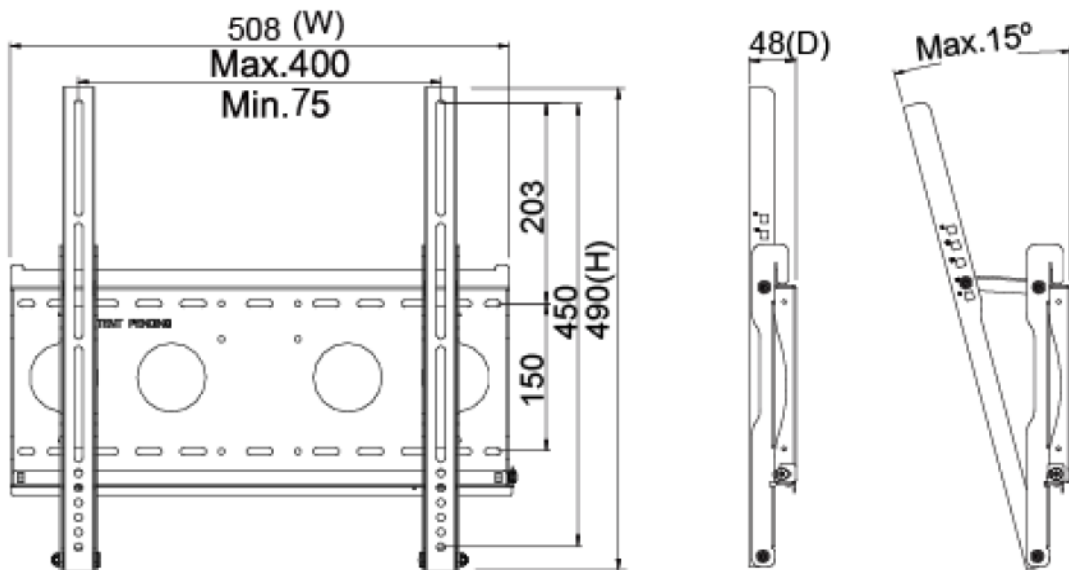


Dimensions of Carton	<b>145.5x33x96 CM</b>
Net Weight	<b>≤55.1 KG</b>
Gross Weight	<b>≤62.7 KG</b>

**Wall Mount Bracket (Option)**



Part No.	WMB-B001		
Mounting Pattern	Max. 400x450 mm	Dimension (WxHxD)	508x490x48 mm
Material	SECC	Net Weight	4.01 KG
Tilt (Hinge)	0°/5°/10°/13°/15°	Support Max. Weight	80 KG
Screw Type	M4/M5/M6/M8	Min. Distance to The Wall	48 mm



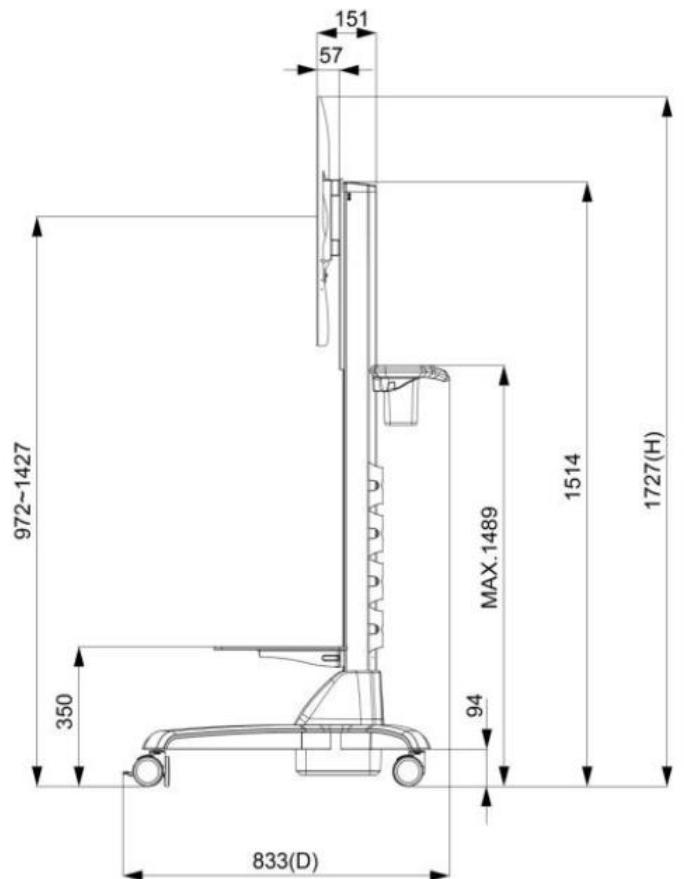
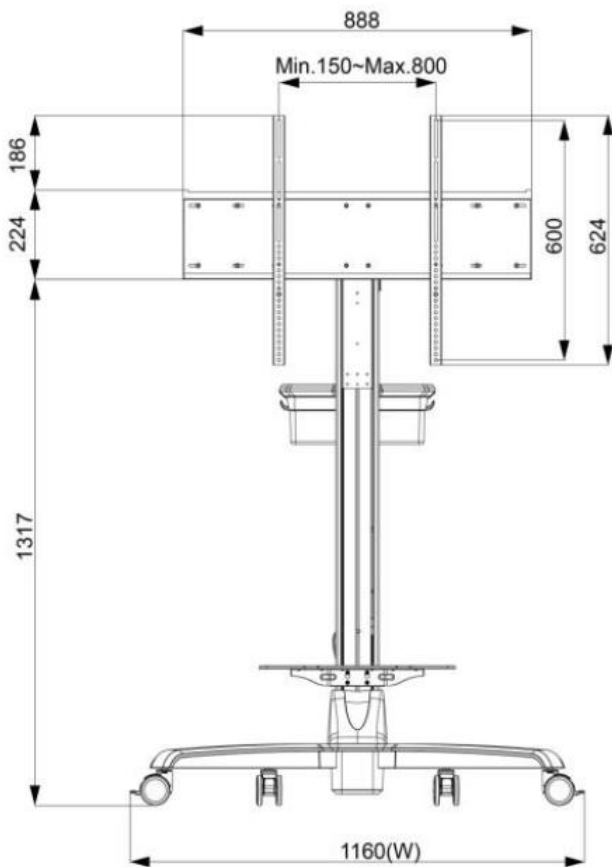
# Nextech I Series 55" Industrial Display/Touch Display

**NTSI550-2 V500**

## Cart (Option)



Net Weight	28.4 KG
Power System	AC 200~240V 50/60Hz
User Interface	Button (up/down)
Packaged Dimension	W1545xD383xH392 mm
Screw Type	M4/M5/M6/M8
Material	Aluminum/Plastic/Steel
Max. Mount Pattern	800x600mm
Max. Weight Load	80 KG
Caster	4 (front 2 braking)
Height Adjust Range	455 mm
RoHS/REACH	Yes





**KIOSK Cabinet (Option)**



Material	SECC
Caster	4 (front 2 braking)
Ingress Protection	Front IP65
Power Socket	None (Wire Hole Reserved)



**Physical Specifications**

Dimension (Max)	<b>1280x745xD*(±1)mm</b>	Net Weight	≦ <b>55.1 KG</b>
VESA Mounting	<b>400x400 mm</b>	Gross Weight	≦ <b>62.7 KG</b>

