

Product Specifications

Customer	
Model	NTSI550-1 V500



Records of Revision			
Vision	Modifying	Old Description	New Description
v2112.1	Preliminary Specifications		
v2112.2	New trademark released		

Features

- ★ 55 inch Industrial Grade Panel, 4K (UHD) Resolution
- ★ VA Wide Viewing Angel 178°/178°
- ★ Optional I.R. Touch
- ★ 10 points Multi-touch, 7H Hardness Tempered Cover Glass
- ★ Metal Cabinet with Diverse Combine Options
- ★ Made in Taiwan, 3 Years Warranty
- ★ Optional High Brightness 700nits, for Outdoor Environment
- ★ Optional Software Remote Control by RS232
- ★ Optional Auto Dimming Function (with Light Sensor)



PSE



BSMI



RoHS



CE



ISO9001



FCC



Wall Mounting



Cart



KIOSK Cabinet

Display Specifications

Model Name	NTSI550XXS9A-XXXXXX-500*	Display Mode	Normally Black
Screen Diagonal	55 inch.	Response Time	8.5 msec.
Display Area	1209.6x680.4 mm	Backlight Unit	LED (white LED)
Resolution	3840x2160 (UHD)	Viewing Angle (L/R, U/D)	178°/178° (CR=10)
Contrast Ratio	4000:1	Backlight Lifetime	>50,000 Hours
Display Ratio	16:9	Operating Temp.	0~50°C
Support Colors	1073M Colors	Storage Temp.	-20~60°C
Pixel Pitch	0.315x0.315 mm		

* X = A~Z, 0~9 (Depends on options)

Display Options

Brightness			
	Brightness	Environment	Model Name
Standard	450nits	General	NTSI550NXS9A-XXXXXX-500
Option	700nits	Outdoor Environment	NTSI550HX29A-XXXXXX-500

* Check the data sheet NTSI550-2 V500

Accessories

Item	Description	Quantity
HDMI Cable	HDMI Male to Male, 1.8 Meter	1
Power Cord	*Country Specific	1
USB Cable	A type, Male to Male, 1.5 Meter*	1

Touch Options

I.R. Touch			
Model Name	NTSI55X <u>I</u> S9A- <u>XXXXUX</u> -500		
Touch Technology	I.R. Touch	Transparency	≥92%
Allowed Touch Points	10 points	Accuracy	99.00%
Interface	USB	Thickness of Cover Lens	4.0±0.2mm
IK Ratings	IK07	Hardness of Cover Lens	7H

Non-Touch	
Model Name	NTSI55X <u>0</u> S9A- <u>XXXX0X</u> -500

Surface Treatment		
	Description	Model Name
Standard	(none)	NTSI550XXS9A-<u>00XXXX</u>-500
Option	Anti-Glare Coating	NTSI550XXS9A- <u>GGXXXX</u> -500

Supported OS

Windows	Win7, Win8, Win10, Win11 ↑
Linux	Kernel 2.6.24 ↑
Android	3.0 ↑
Mac	10.5.x ↑ (Intel CPU)

General Options

Color of Cabinet		
	Description	Model Name
Standard	Black	NTSI550XXS9A-XXBXXX-500
Option 1	White	NTSI550XXS9A-XX W XXX-500
Option 2	Silver	NTSI550XXS9A-XX S XXX-500
Options	Other Colors	NTSI550XXS9A-XX X XXX-500

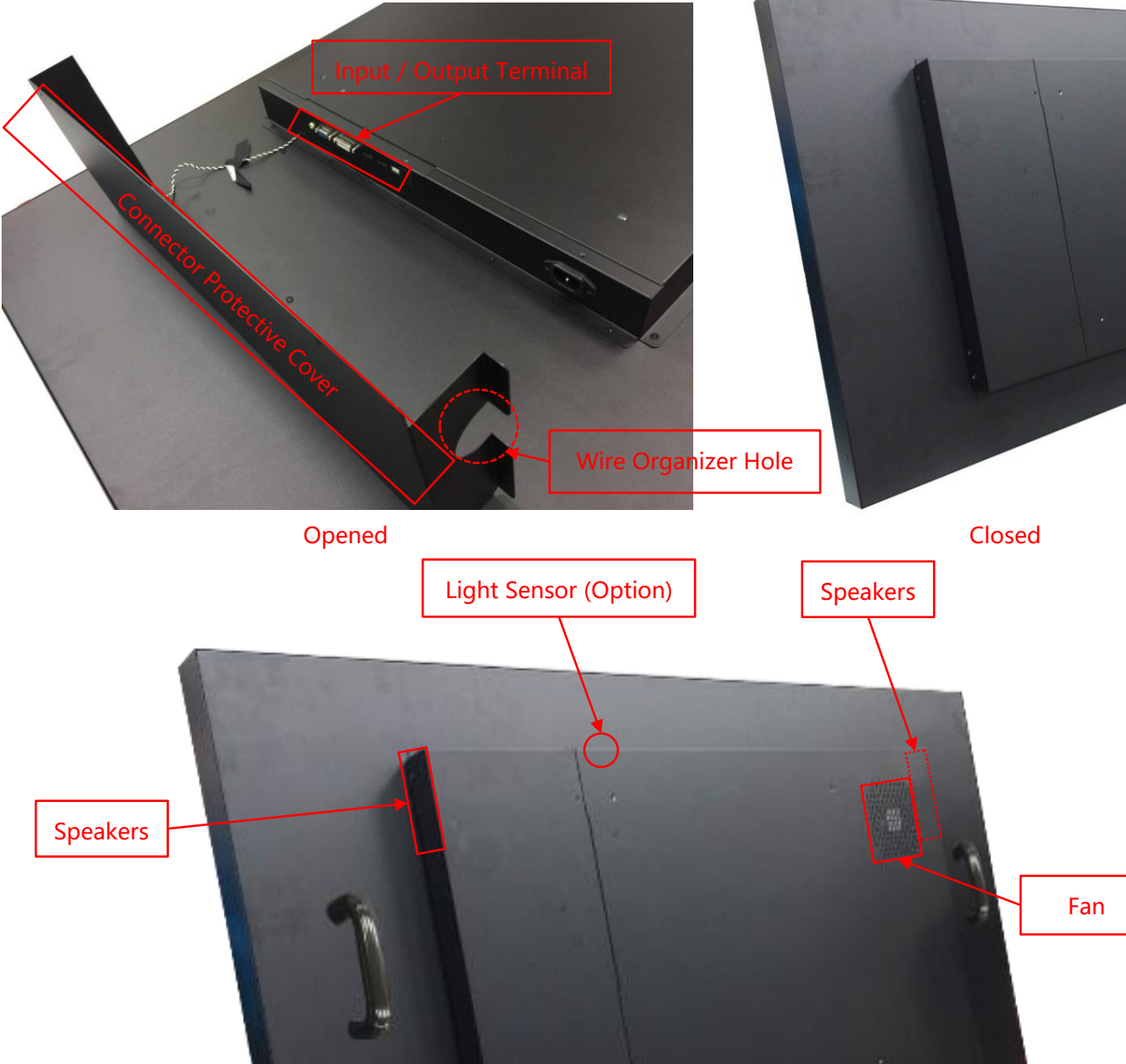
* X = A~Z, 0~9 (Depends on Color)

Material of Cabinet		
	Description	Model Name
Standard	SECC	NTSI550XXS9A-XXXSXX-500
Option 1	Stainless Steel	NTSI550XXS9A-XXX L XX-500
Option 2	Aluminum	NTSI550XXS9A-XXX A XX-500

Touch Interface		
	Description	Model Name
Standard	USB	NTSI550XIS9A-XXXXUX-500
Option	Non-Touch	NTSI550X0S9A-XXXX 0 X-500

Cooling Fan		
	Description	Model Name
Standard	Fanless	NTSI550XIS9A-XXXXX0-500
Option	7 Blades/12V/1200r.p.m/25dB	NTSI550X0S9A-XXXXX F -500

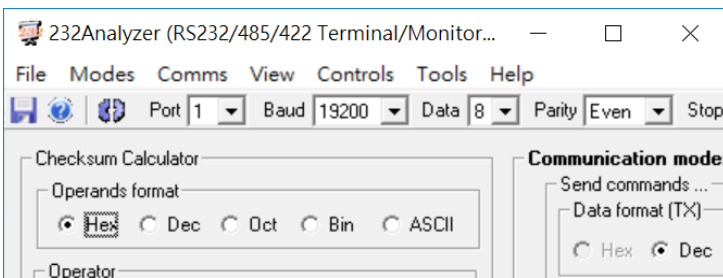
Input /Output



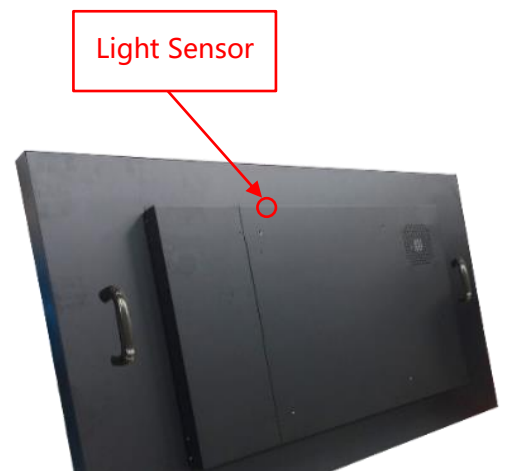
Input / Output	Connectors	Input / Output	Connectors
HDMI Input	2	USB 2.0 Interface	1
VGA Input	1	RS232	Option
DisplayPort Input	2	Speakers	10Wx2
Audio Input (3.5mm)	1	Light Sensor	Option
AC Power Input (C14)	1		

Other Options

OSD Control		
	Item	Description
Standard	Button	Rear Physical Button
Option 1	Software Remote Control	Software Remote Control by RS232/Serial Port
Option 2	Auto Dimming	Auto Brightness Adjusting by Light Sensor



* Software Remote

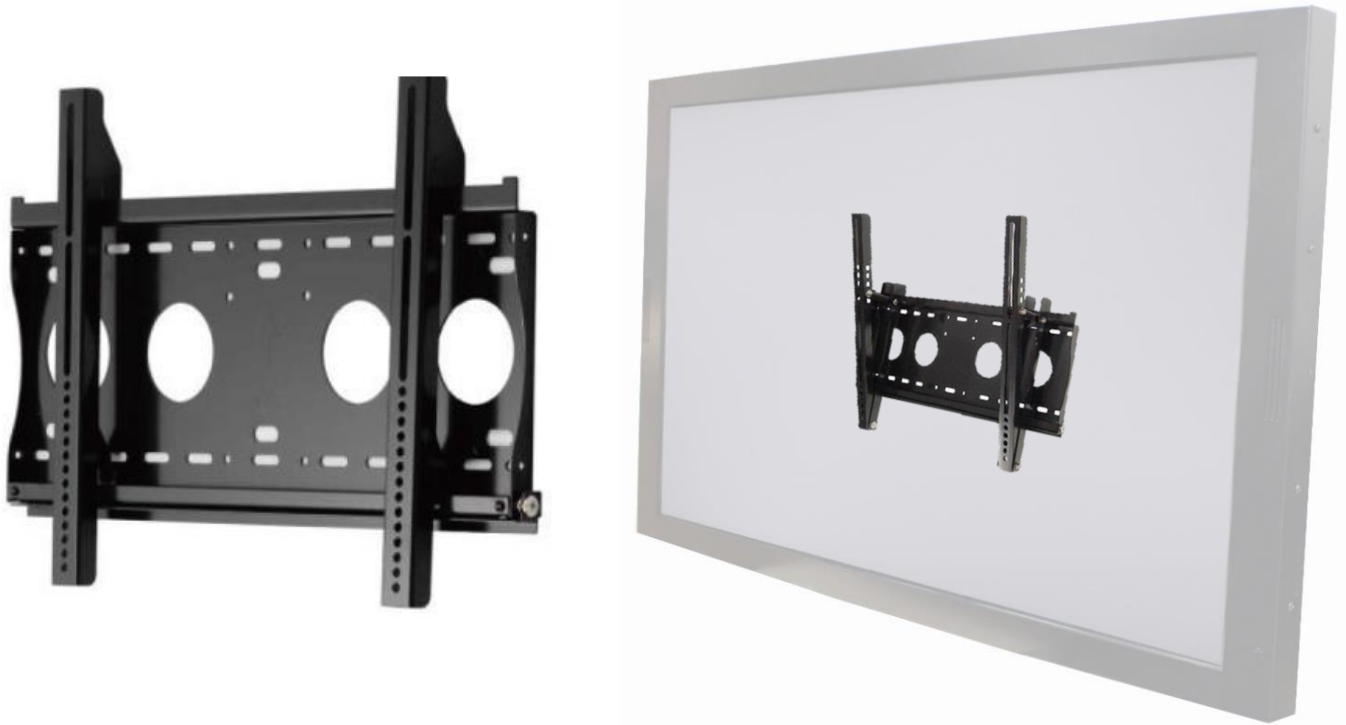


Packing Information

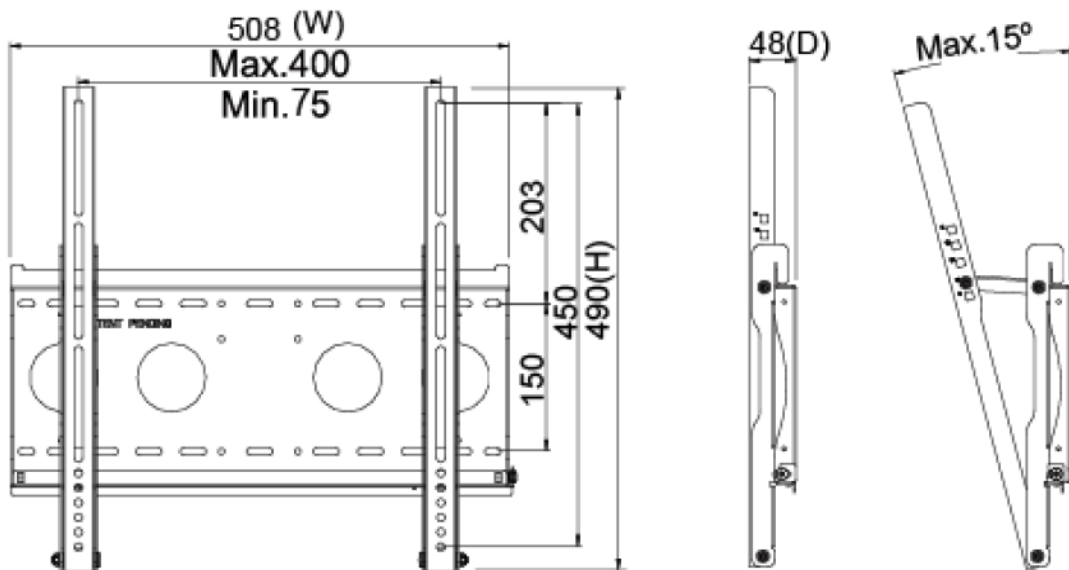


Dimensions of Carton	145.5x33x96 CM
Net Weight	≤ 55.1 KG
Gross Weight	≤ 62.7 KG

Wall Mount Bracket (Option)



Part No.	WMB-B001		
Mounting Pattern	Max. 400x450 mm	Dimension (WxHxD)	508x490x48 mm
Material	SECC	Net Weight	4.01 KG
Tilt (Hinge)	0°/5°/10°/13°/15°	Support Max. Weight	80 KG
Screw Type	M4/M5/M6/M8	Min. Distance to The Wall	48 mm



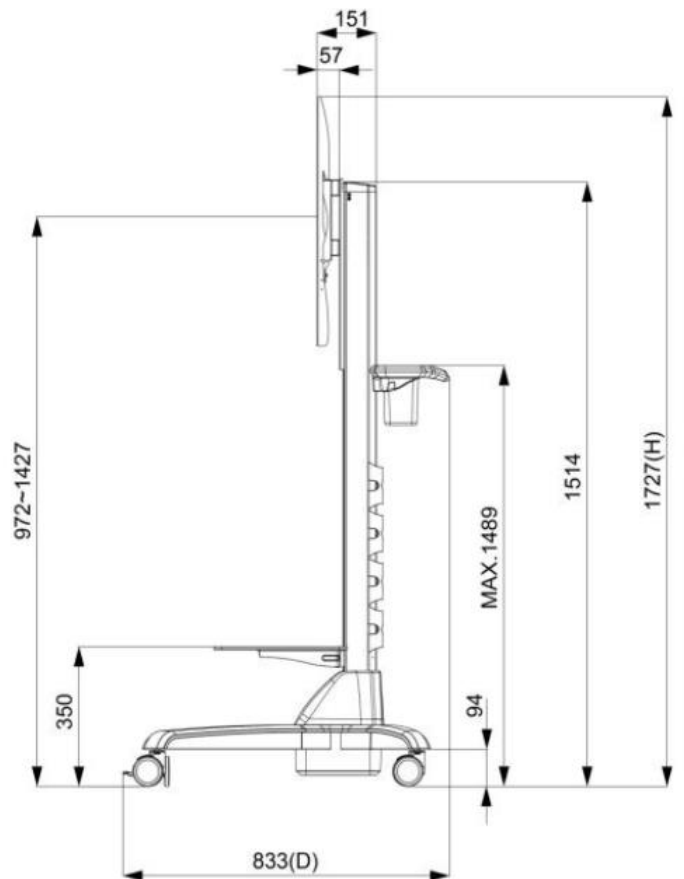
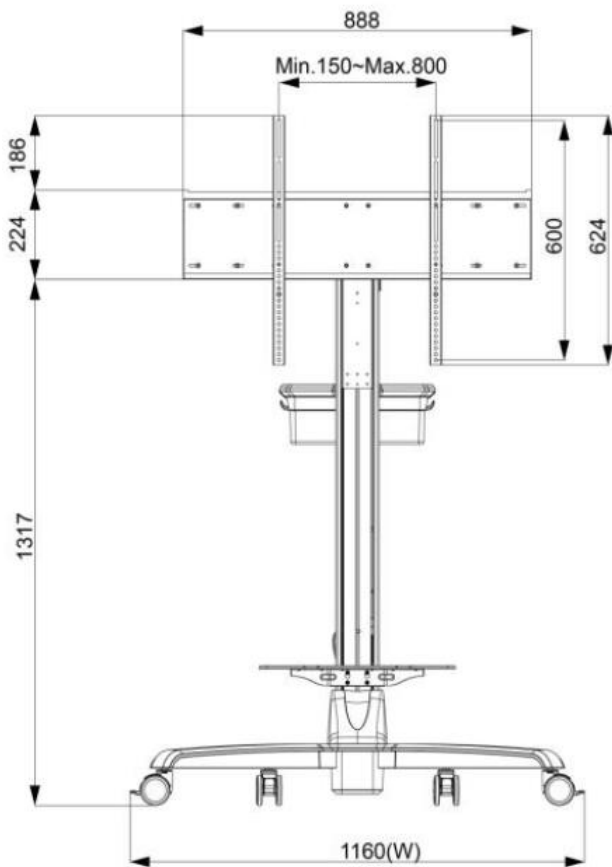
Nextech I Series 55" Industrial Display/Touch Display

NTSI550-1 V500

Cart (Option)



Net Weight	28.4 KG
Power System	AC 200~240V 50/60Hz
User Interface	Button (up/down)
Packaged Dimension	W1545xD383xH392 mm
Screw Type	M4/M5/M6/M8
Material	Aluminum/Plastic/Steel
Max. Mount Pattern	800x600mm
Max. Weight Load	80 KG
Caster	4 (front 2 braking)
Height Adjust Range	455 mm
RoHS/REACH	Yes



KIOSK Cabinet (Option)



Material	SECC
Caster	4 (front 2 braking)
Ingress Protection	Front IP65
Power Socket	None (Wire Hole Reserved)



